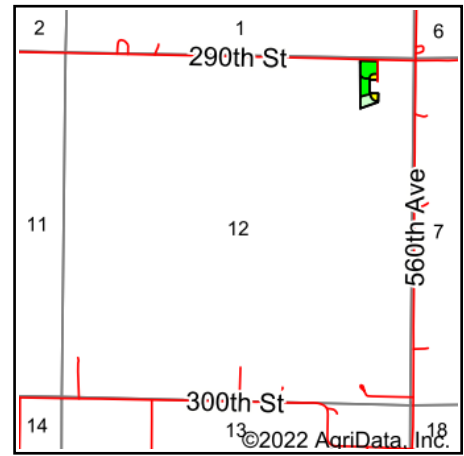


Soils Map



Soils data provided by USDA and NRCS.



State: **Iowa**
 County: **Story**
 Location: **12-82N-24W**
 Township: **Palestine**
 Acres: **3.63**
 Date: **2/13/2022**



Area Symbol: IA169, Soil Area Version: 33

Code	Soil Description	Acres	Percent of field	CSR2 Legend	Non-Irr Class *c	CSR2**
L55	Nicollet loam, 1 to 3 percent slopes	1.45	39.9%		Ie	91
L138B	Clarion loam, Bemis moraine, 2 to 6 percent slopes	0.90	24.8%		Ile	88
L638C2	Clarion-Storden complex, Bemis moraine, 6 to 10 percent slopes, moderately eroded	0.77	21.2%		IIle	75
L62D2	Storden loam, Bemis moraine, 10 to 16 percent slopes, moderately eroded	0.51	14.0%		IVe	41
Weighted Average					2.09	79.8

**IA has updated the CSR values for each county to CSR2.

*c: Using Capabilities Class Dominant Condition Aggregation Method

Soils data provided by USDA and NRCS.