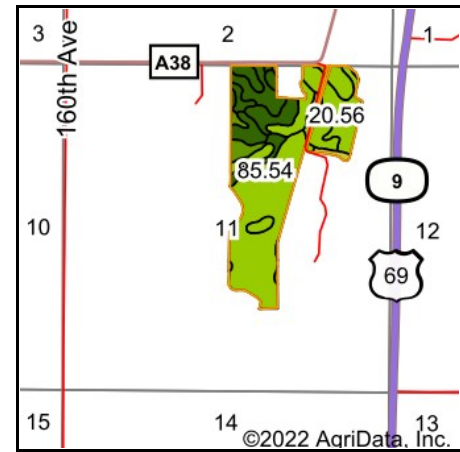


Soils Map



Soils data provided by USDA and NRCS.



State: **Iowa**
 County: **Winnebago**
 Location: **11-98N-24W**
 Township: **Forest**
 Acres: **106.1**
 Date: **11/2/2022**



Area Symbol: IA189, Soil Area Version: 31							
Code	Soil Description	Acres	Percent of field	CSR2 Legend	Non-Irr Class *c	CSR2**	CSR
823	Ridgeport sandy loam, 0 to 2 percent slopes	42.23	39.8%		lls	56	37
658	Mayer loam, 0 to 2 percent slopes	13.86	13.1%		llw	54	62
224	Linder loam, 0 to 2 percent slopes	11.49	10.8%		lls	57	50
55	Nicollet clay loam, 1 to 3 percent slopes	11.16	10.5%		lw	89	88
638D2	Omsrud-Storden complex, 10 to 16 percent slopes, moderately eroded	7.47	7.0%		lve	53	47
138C2	Clarion loam, 6 to 10 percent slopes, moderately eroded	6.47	6.1%		llle	83	63
138B	Clarion loam, 2 to 6 percent slopes	4.57	4.3%		lle	89	80
485B	Spillville loam, 2 to 5 percent slopes	3.63	3.4%		lle	88	85
638C2	Clarion-Storden complex, 6 to 10 percent slopes, moderately eroded	3.50	3.3%		llle	75	57
5010	Pits, sand and gravel	1.46	1.4%			0	0
175B	Dickinson fine sandy loam, 2 to 5 percent slopes	0.14	0.1%		llle	50	54
1133	Colo silty clay loam, channeled, 0 to 2 percent slopes	0.12	0.1%		V w	5	25
Weighted Average					*-	63.1	53

**IA has updated the CSR values for each county to CSR2.

*c: Using Capabilities Class Dominant Condition Aggregation Method

*- Non Irr Class weighted average cannot be calculated on the current soils data due to missing data.