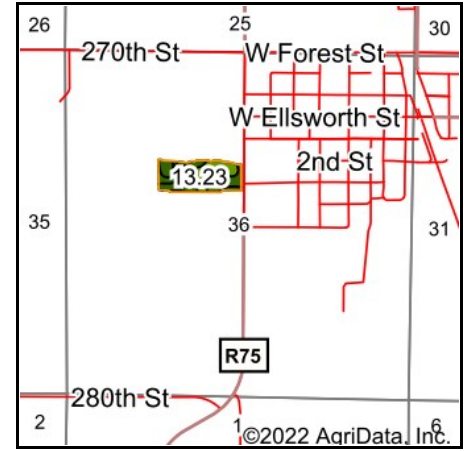


# Soils Map



Soils data provided by USDA and NRCS.



State: **Iowa**  
 County: **Wright**  
 Location: **36-91N-23W**  
 Township: **Blaine**  
 Acres: **13.23**  
 Date: **7/18/2022**



Maps Provided By:



Area Symbol: IA197, Soil Area Version: 30							
Code	Soil Description	Acres	Percent of field	CSR2 Legend	Non-Irr Class *c	CSR2**	CSR
107	Webster clay loam, 0 to 2 percent slopes	5.17	39.1%		IIw	86	83
95	Harps clay loam, 0 to 2 percent slopes	4.71	35.6%		IIw	72	62
55	Nicollet clay loam, 1 to 3 percent slopes	1.97	14.9%		Iw	89	88
138C2	Clarion loam, 6 to 10 percent slopes, moderately eroded	1.10	8.3%		IIIe	83	63
138B	Clarion loam, 2 to 6 percent slopes	0.14	1.1%		Ile	89	80
27B	Terril loam, 2 to 6 percent slopes	0.14	1.1%		Ile	87	80
<b>Weighted Average</b>					<b>1.93</b>	<b>81.3</b>	<b>74.5</b>

\*\*IA has updated the CSR values for each county to CSR2.

\*c: Using Capabilities Class Dominant Condition Aggregation Method