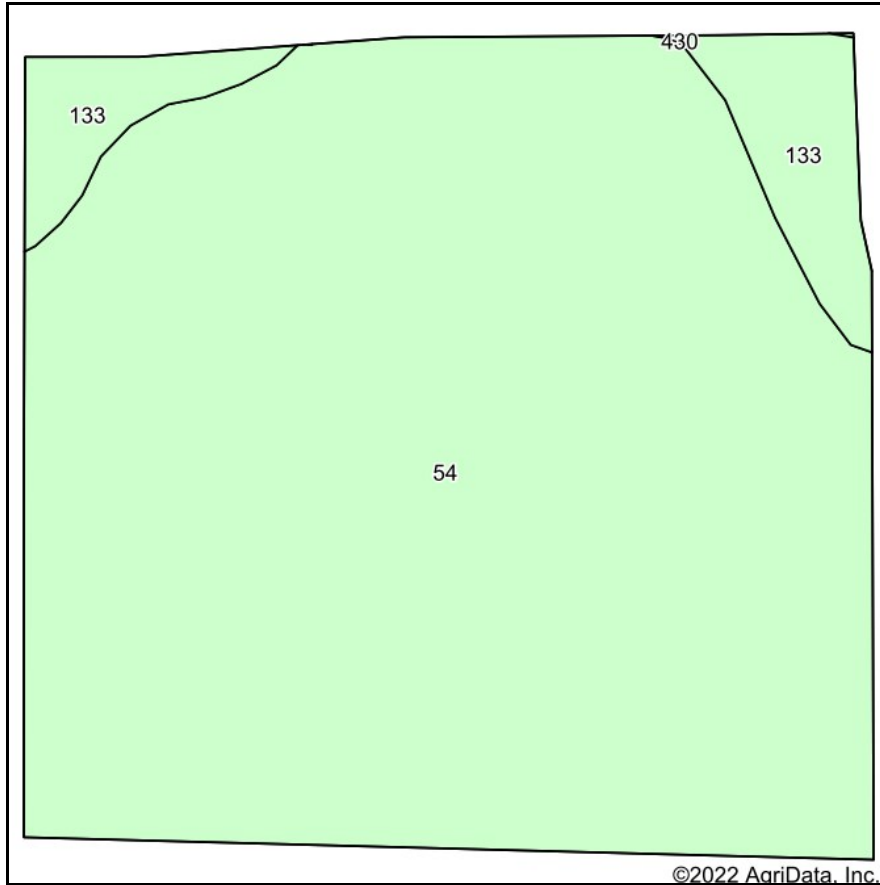
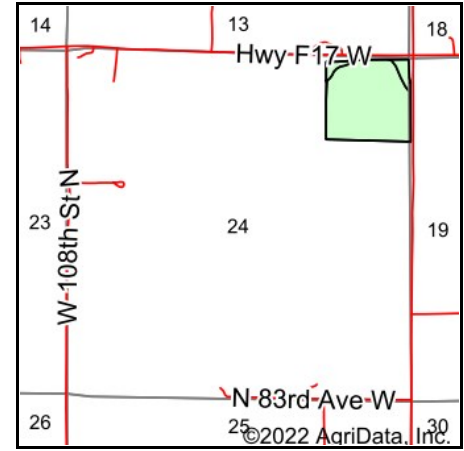


Soils Map



Soils data provided by USDA and NRCS.



State: **Iowa**
 County: **Jasper**
 Location: **24-81N-21W**
 Township: **Clear Creek**
 Acres: **36.19**
 Date: **5/3/2022**



Area Symbol: IA099, Soil Area Version: 27							
Code	Soil Description	Acres	Percent of field	CSR2 Legend	Non-Irr Class *c	CSR2**	CSR
54	Zook silty clay loam, 0 to 2 percent slopes, occasionally flooded	33.45	92.4%		IIw	60	70
133	Colo silty clay loam, 0 to 2 percent slopes, occasionally flooded	2.74	7.6%		IIw	78	80
Weighted Average					2.00	61.4	70.8

**IA has updated the CSR values for each county to CSR2.

*c: Using Capabilities Class Dominant Condition Aggregation Method