

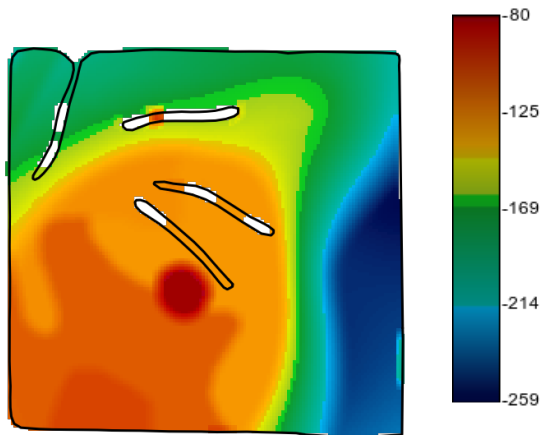
# Product Summary

## General Information

Field			
Dealer	Landus Cooperative	Field	CC03SE01 (Wilson North 35)
Location	Collins Maxwell	Section	81N-21W-3
Grower		Area	37.5 ac
Farm		Crop	Soybeans
Date Created	10/16/2020		

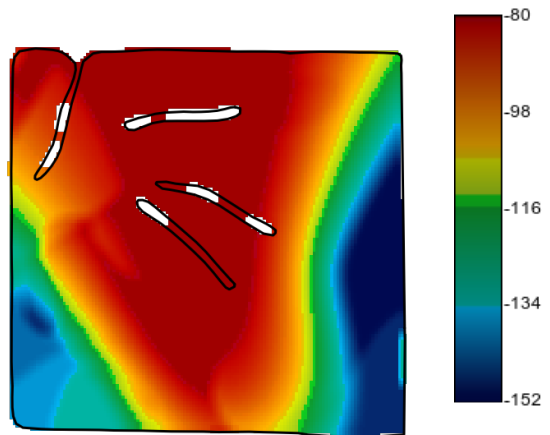
LC Potash (lbs/ac)

Shapefile	5861.41		
Min	80	Max	259
Avg	157	Total Acres Spread	38.2



LC MAP (lbs/ac)

Shapefile	3815.78		
Min	80	Max	152
Avg	102	Total Acres Spread	38.2

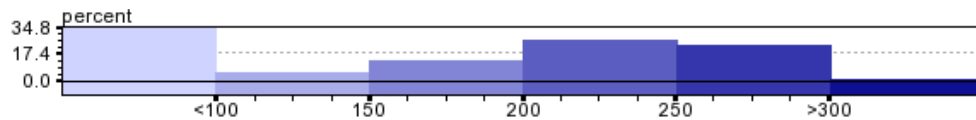
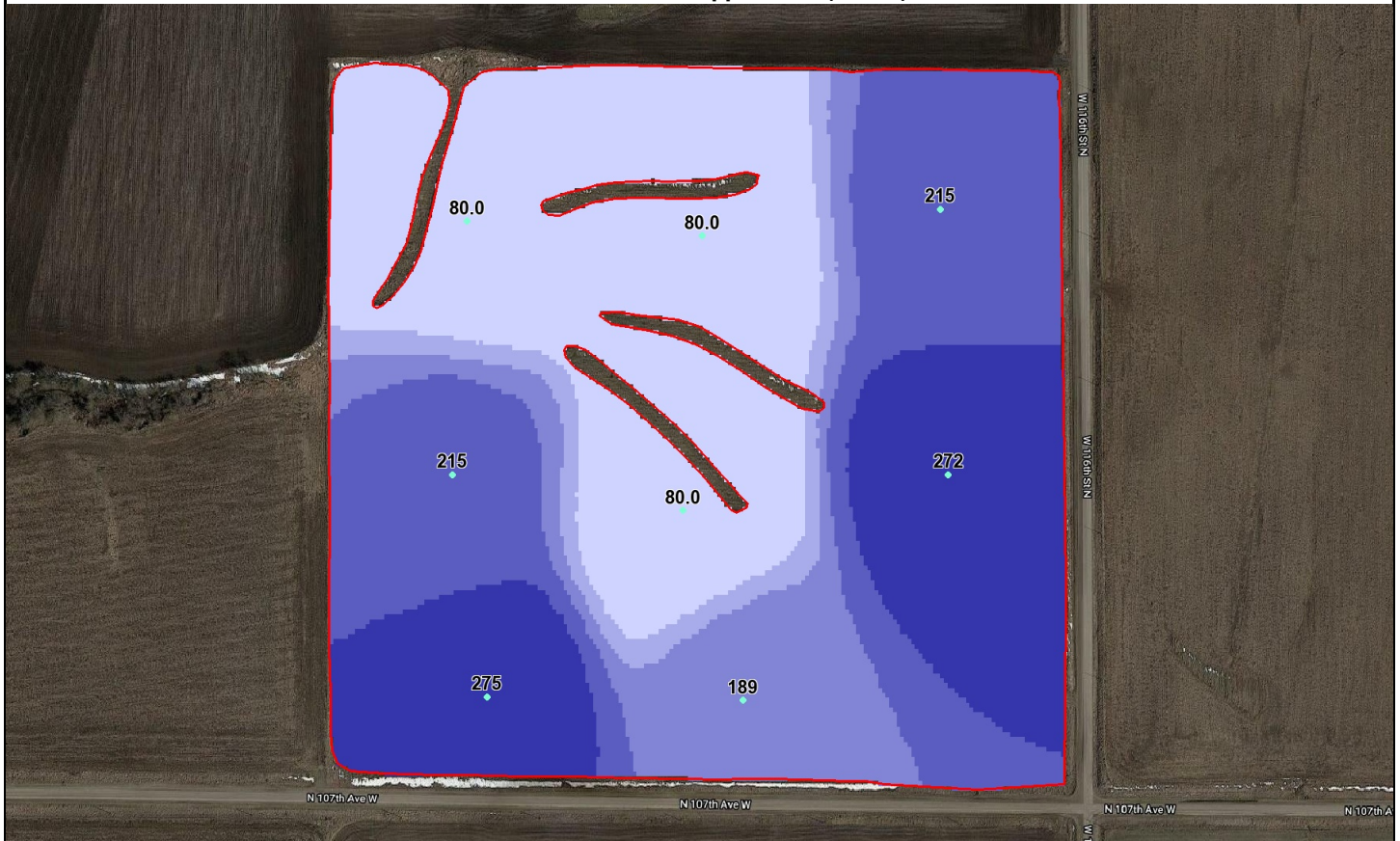


Grower: [REDACTED]

Farm: [REDACTED]

Field(s): Wilson North 35

MES10 - Fertilizer Application (lbs/ac)



Lab: Midwest Labs

Custom Eq: Landus Coop Recs

Commodity: Corn

Sample Date: 2020-08-01

Constraints:

Corn Yield:	200 bu/ac	Bean Yield:	0 bu/ac	Max Rate:	500.0 lbs/ac	Multiplier:	N/A
Corn Yield Yr 2:	0 bu/ac	Crop Type:	1 Yr Corn	Min Rate:	80.0 lbs/ac	Subtract:	N/A
P Maintenance Level:	25 ppm	Switch Rate:	0.0 lbs/ac				

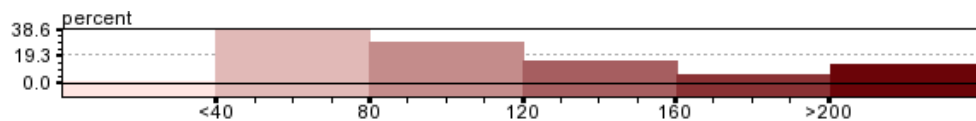
Minimum Application Rate:	80.0 lbs/ac	Total Product:	6505.53 lbs
Maximum Application Rate:	275.0 lbs/ac	Total Product Bulk:	3.25 ton
Average Application Rate:	174.47 lbs/ac	Product Cost / Bulk:	\$0.0/ton
Application Area:	37.29 ac	Total Product Price:	\$0.0
Average Field Rate:	174.47 lbs/ac	Application Cost / Area:	\$0.0/ac
Total Area:	37.29 ac	Total Application Cost:	\$0.0
		Total Cost:	\$0.0

Grower: [REDACTED]

Farm: [REDACTED]

Field(s): Wilson North 35

Potash - Fertilizer Application (lbs/ac)



Lab: Midwest Labs

Custom Eq: Landus Coop Recs

Commodity: Corn

Sample Date: 2020-08-01

Constraints:

Corn Yield:	200 bu/ac	Bean Yield:	0 bu/ac	Max Rate:	500.0 lbs/ac	Multiplier:	N/A
Corn Yield Yr 2:	0 bu/ac	Crop Type:	1 Yr Corn	Min Rate:	50.0 lbs/ac	Subtract:	N/A
K Maintenance Level:	175 ppm	Switch Rate:	0.0 lbs/ac				

Minimum Application Rate:	50.0 lbs/ac	Total Product:	4038.5 lbs
Maximum Application Rate:	215.0 lbs/ac	Total Product Bulk:	2.02 ton
Average Application Rate:	108.31 lbs/ac	Product Cost / Bulk:	\$0.0/ton
Application Area:	37.29 ac	Total Product Price:	\$0.0
Average Field Rate:	108.31 lbs/ac	Application Cost / Area:	\$0.0/ac
Total Area:	37.29 ac	Total Application Cost:	\$0.0
		Total Cost:	\$0.0

## Fertilizer Application Summary

Grower: XXXXXXXXXX  
 Farm: XXXXXXXXXX  
 Field(s): Wilson North 35

Commodity: Corn  
 Labs: Midwest Labs

Selected Parameters					
Product	Rec %	Max Rate	Min Rate	+/-	Switch Rate
MES10	100	500.0 lbs/ac	80.0 lbs/ac	0.00	0.0 lbs/ac
Potash	100	500.0 lbs/ac	50.0 lbs/ac	0.00	0.0 lbs/ac

Product	Wt App	Wt App Bulk	Applied Area	Product Cost	Est. Cost	Est. Cost/Area
MES10	6505.53 (lbs)	3.25 ton	37.29	\$0.0/ton	\$0.0	\$0.0/ac
Potash	4038.50 (lbs)	2.02 ton	37.29	\$0.0/ton	\$0.0	\$0.0/ac
Application				\$0.0 /ac	\$0.0	\$0.0/ac
Totals					\$0.00	\$0.0/ac

Field Summary					
Field	PLS ID	FSA ID	County	Area	Centroid
Wilson North 35		--	Jasper	37.40 ac	41.850823, -93.272950