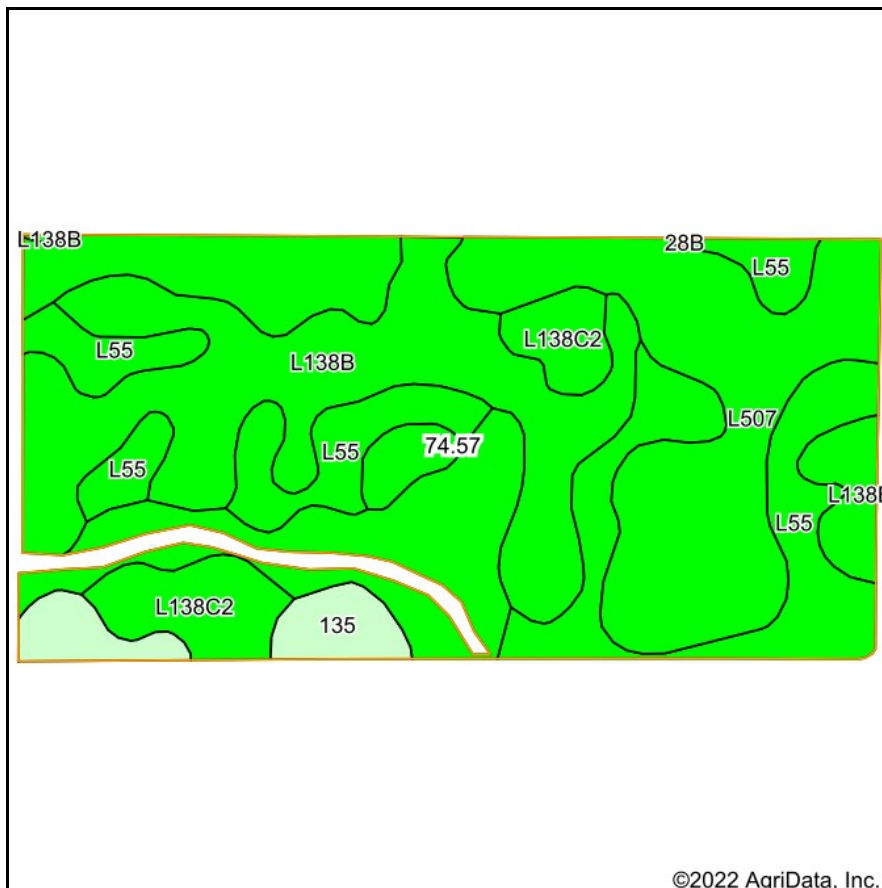
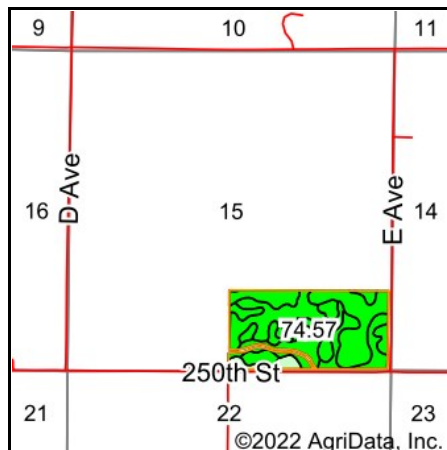


# Soils Map



Soils data provided by USDA and NRCS.



State: **Iowa**  
 County: **Boone**  
 Location: **15-83N-28W**  
 Township: **Beaver**  
 Acres: **74.57**  
 Date: **4/26/2022**



Area Symbol: IA015, Soil Area Version: 29

Code	Soil Description	Acres	Percent of field	CSR2 Legend	Non-Irr Class *c	CSR2**	CSR
L507	Canisteo clay loam, Bemis moraine, 0 to 2 percent slopes	29.30	39.3%		llw	87	
L138B	Clarion loam, Bemis moraine, 2 to 6 percent slopes	21.34	28.6%		lle	88	
L55	Nicollet loam, 1 to 3 percent slopes	15.72	21.1%		le	91	
L138C2	Clarion loam, Bemis moraine, 6 to 10 percent slopes, moderately eroded	4.94	6.6%		llle	83	
135	Coland clay loam, 0 to 2 percent slopes, occasionally flooded	3.27	4.4%		llw	76	82
<b>Weighted Average</b>					<b>1.86</b>	<b>87.4</b>	<b>*-</b>

\*\*IA has updated the CSR values for each county to CSR2.

\*- CSR weighted average cannot be calculated on the current soils data, use prior data version for csr values.

\*c: Using Capabilities Class Dominant Condition Aggregation Method