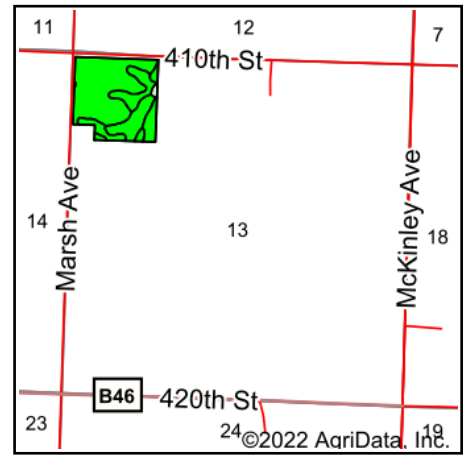
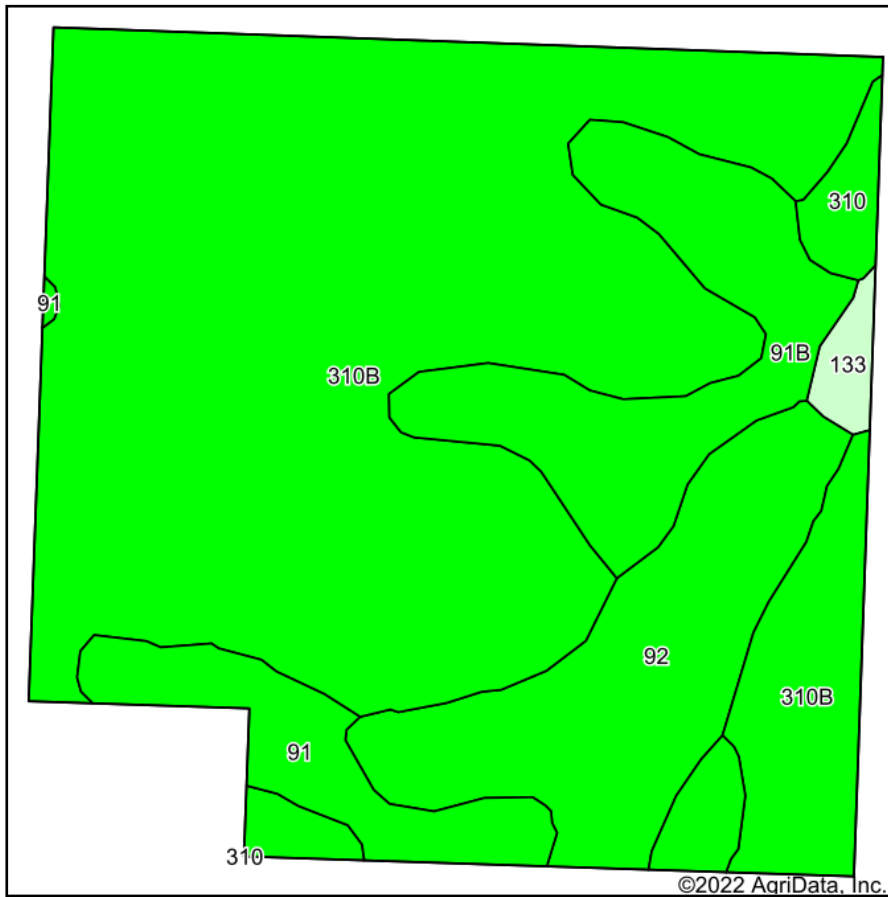


Soils Map



State: **Iowa**
 County: **Sioux**
 Location: **13-95N-43W**
 Township: **Floyd**
 Acres: **35.76**
 Date: **1/12/2022**



Maps Provided By:
surety
 CUSTOMIZED ONLINE MAPPING
 © AgriData, Inc. 2021 www.AgriDataInc.com



Area Symbol: IA167, Soil Area Version: 31							
Code	Soil Description	Acres	Percent of field	CSR2 Legend	Non-Irr Class *c	CSR2**	CSR
310B	Galva silty clay loam, 2 to 5 percent slopes	23.72	66.3%		Ile	95	67
92	Marcus silty clay loam, 0 to 2 percent slopes	4.78	13.4%		Ilw	94	72
91B	Primghar silty clay loam, 2 to 5 percent slopes	3.89	10.9%		Ile	95	75
91	Primghar silty clay loam, 0 to 2 percent slopes	2.45	6.9%		Iw	100	77
310	Galva silty clay loam, 0 to 2 percent slopes	0.54	1.5%		I	100	72
133	Colo silty clay loam, deep loess, 0 to 2 percent slopes, occasionally flooded	0.38	1.1%		Ilw	78	70
Weighted Average					1.92	95.1	69.3

**IA has updated the CSR values for each county to CSR2.

*c: Using Capabilities Class Dominant Condition Aggregation Method

Soils data provided by USDA and NRCS.