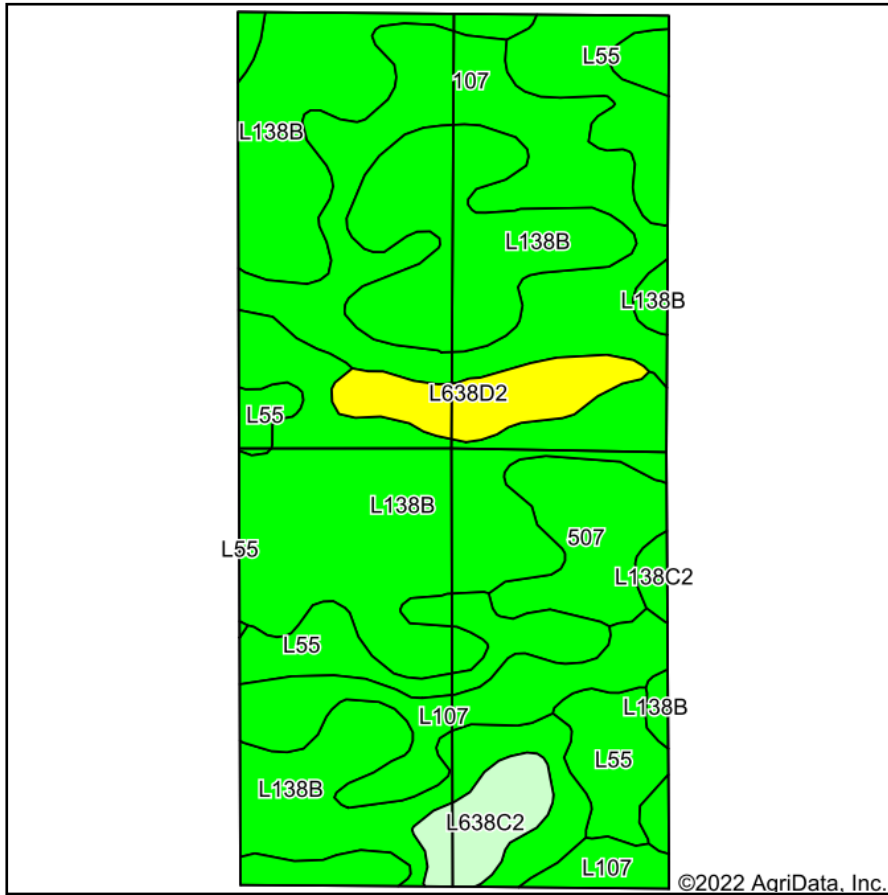
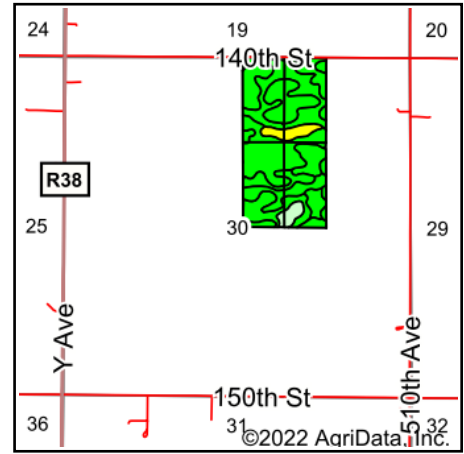


# Soils Map



Soils data provided by USDA and NRCS.



State: **Iowa**  
 County: **Story**  
 Location: **30-85N-24W**  
 Township: **Lafayette**  
 Acres: **78.63**  
 Date: **1/12/2022**



Area Symbol: IA169, Soil Area Version: 33

Code	Soil Description	Acres	Percent of field	CSR2 Legend	Non-Irr Class *c	CSR2**	CSR
L138B	Clarion loam, Bemis moraine, 2 to 6 percent slopes	37.57	47.8%		Ile	88	
107	Webster clay loam, 0 to 2 percent slopes	12.89	16.4%		IIw	86	89
L55	Nicollet loam, 1 to 3 percent slopes	10.16	12.9%		Ie	91	
L107	Webster clay loam, Bemis moraine, 0 to 2 percent slopes	7.32	9.3%		IIw	88	
507	Canisteo clay loam, 0 to 2 percent slopes	4.12	5.2%		IIw	84	84
L638D2	Omsrud-Storden complex, Bemis moraine, 10 to 16 percent slopes, moderately eroded	3.20	4.1%		IVe	53	
L638C2	Clarion-Storden complex, Bemis moraine, 6 to 10 percent slopes, moderately eroded	2.31	2.9%		IIIe	75	
138B	Clarion loam, 2 to 6 percent slopes	0.62	0.8%		Ile	89	86
L138C2	Clarion loam, Bemis moraine, 6 to 10 percent slopes, moderately eroded	0.44	0.6%		IIIe	83	
Weighted Average					1.99	86	*-

\*\*IA has updated the CSR values for each county to CSR2.

\*- CSR weighted average cannot be calculated on the current soils data, use prior data version for csr values.

\*c: Using Capabilities Class Dominant Condition Aggregation Method

Soils data provided by USDA and NRCS.