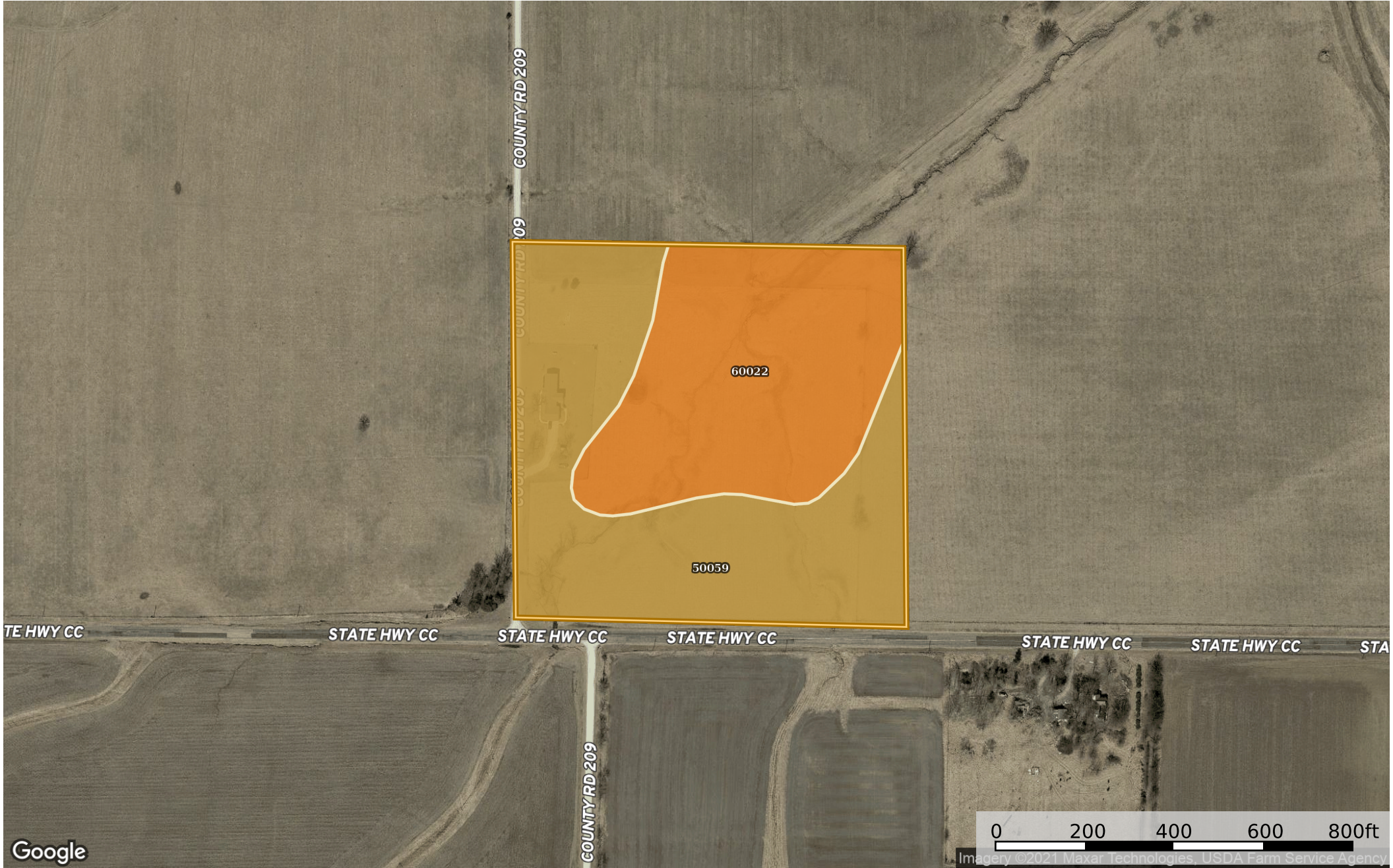




Tract 3 - 16.92 ac





Tract 3 - 16.92 ac

SOIL CODE	SOIL DESCRIPTION	ACRES	%	CPI	NCCPI	CAP
50059	Mexico silt loam, 1 to 4 percent slopes, eroded	9.34	55.2	0	73	3e
60022	Leonard silt loam, 1 to 6 percent slopes, eroded	7.58	44.8	0	62	3e
TOTALS		16.92(*)	100%	-	68.07	3.0









(\*) Total acres may differ in the second decimal compared to the sum of each acreage soil. This is due to a round error because we only show the acres of each soil with two decimal.

## Capability Legend

Increased Limitations and Hazards

Decreased Adaptability and Freedom of Choice Users

Land, Capability

								
	1	2	3	4	5	6	7	8
'Wild Life'	•	•	•	•	•	•	•	•
Forestry	•	•	•	•	•	•	•	
Limited	•	•	•	•	•	•	•	
Moderate	•	•	•	•	•	•		
Intense	•	•	•	•	•			
Limited	•	•	•	•				
Moderate	•	•	•					
Intense	•	•						
Very Intense	•							

## Grazing Cultivation

(c) climatic limitations (e) susceptibility to erosion

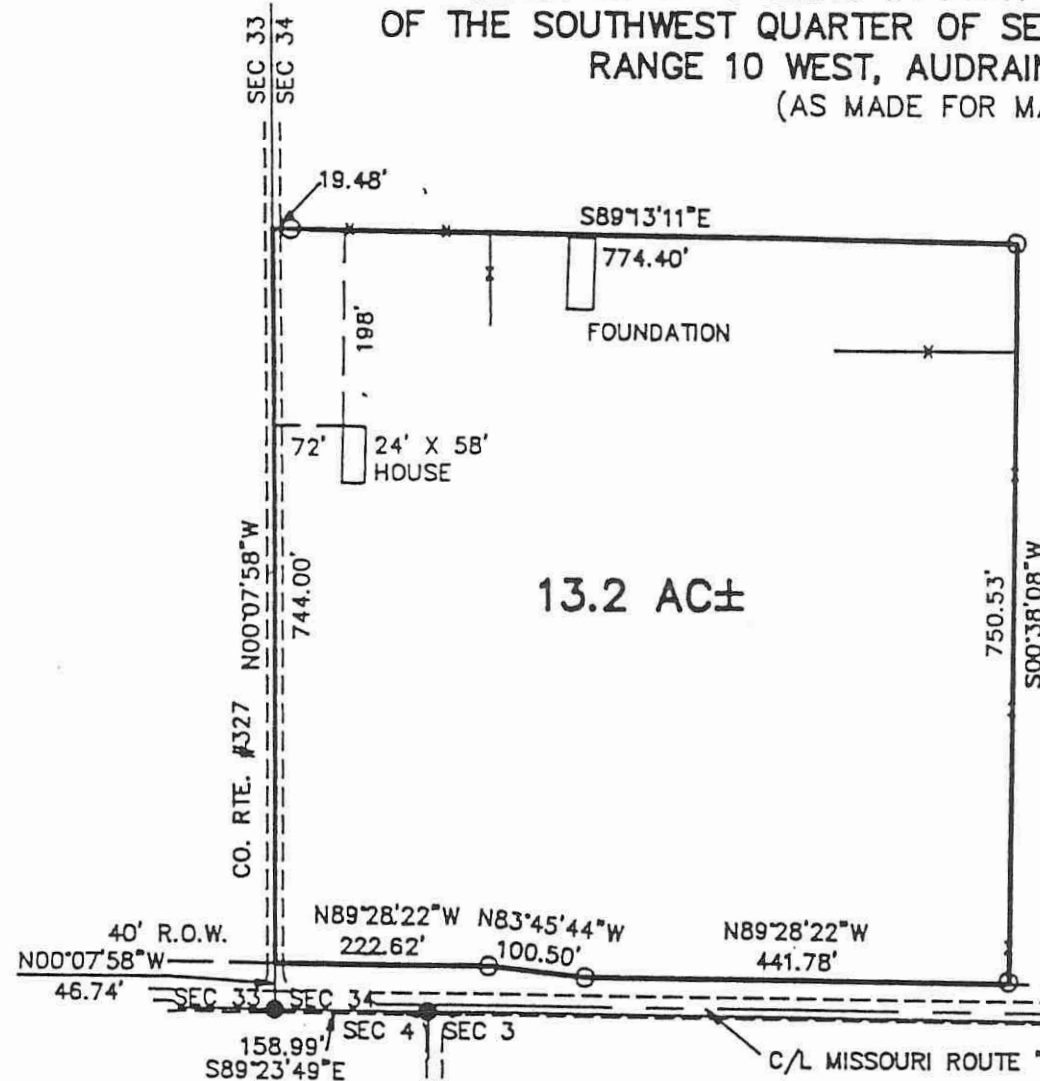
(s) soil limitations within the rooting zone (w) excess of water



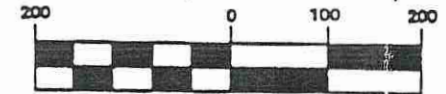
# BOUNDARY SURVEY

A TRACT OF LAND LYING IN PART OF THE SOUTHWEST QUARTER  
OF THE SOUTHWEST QUARTER OF SECTION 34, TOWNSHIP 53 NORTH,  
RANGE 10 WEST, AUDRAIN COUNTY, MISSOURI.

(AS MADE FOR MARY WILSON)



GRAPHIC SCALE



( IN FEET )

1 inch = 200 ft.

004816

0278 PAGE 564

## RECORDER'S INFORMATION

State of Missouri, County of Audrain, ss.

Filed for record at 1 o'clock 30 min.

P. M. Recorded in book 278 page 564

9th Day Nov Month 19 93/

Witness my hand seal of office

Virginia Pehle, Recorder

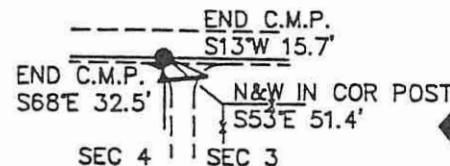
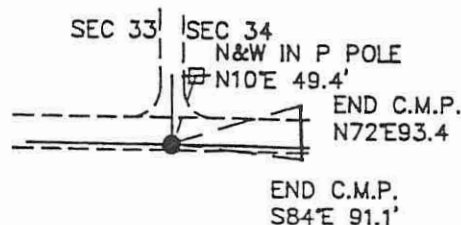
Virginia Pehle

By *Wanda Kelsay*

Wanda Kelsay

Deputy

THIS PLAT AS /  
DURING JUNE O  
ACCURATE RECC  
EXECUTED IN A  
MINIMUM STAND  
SURVEYS OF TH  
NATURAL RESOL



● = 1/2" IRON PIN SET BY  
BORMANN, L.S. #2012

○ = 5/8" IRON PIN SET THIS SURVEY

THE **CRANE DESIGN GROUP** INC.

CONSULTING ENGINEERS - SURVEYORS  
1401 HARRISON HILL - P. O. BOX 1280  
HANNIBAL, MO 63401  
PH: 314-221-8443 FAX: 314-221-2230

HAROLD R. CRAI