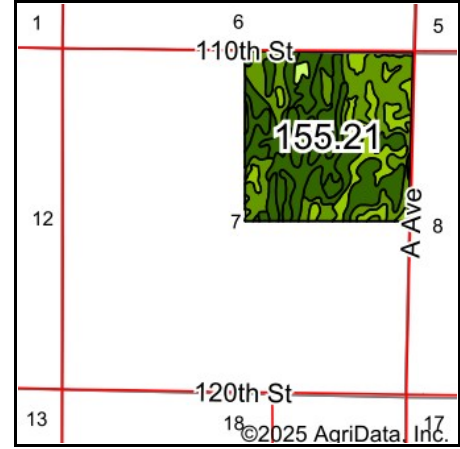


Soils Map



Soils data provided by USDA and NRCS.



State: **Iowa**
 County: **Hardin**
 Location: **7-89N-22W**
 Township: **Alden**
 Acres: **155.21**
 Date: **8/27/2025**



Area Symbol: IA083, Soil Area Version: 31

Code	Soil Description	Acres	Percent of field	CSR2 Legend	Hydric Rating	Non-Irr Class *c	CSR2**
95	Harps clay loam, 0 to 2 percent slopes	47.10	30.3%		100	IIw	72
329	Webster-Nicollet complex, 0 to 3 percent slopes	32.11	20.7%		62	IIw	87
138B	Clarion loam, 2 to 6 percent slopes	25.02	16.1%		5	Ile	89
6	Okoboji silty clay loam, 0 to 1 percent slopes	24.09	15.5%		100	IIIw	59
507	Canisteo clay loam, 0 to 2 percent slopes	19.40	12.5%		100	IIw	84
138C2	Clarion loam, 6 to 10 percent slopes, moderately eroded	4.79	3.1%			IIIe	83
L62D2	Storden loam, Bemis moraine, 10 to 16 percent slopes, moderately eroded	1.34	0.9%			IVe	41
506	Wacousta silt loam, 0 to 1 percent slopes	0.74	0.5%		100	IIIw	74
L62C2	Storden loam, Bemis moraine, 6 to 10 percent slopes, moderately eroded	0.40	0.3%			IIIe	64
55	Nicollet clay loam, 1 to 3 percent slopes	0.22	0.1%		10	Iw	89
Weighted Average						2.21	77.4

Soils data provided by USDA and NRCS.

**IA has updated the CSR values for each county to CSR2.

*c: Using Capabilities Class Dominant Condition Aggregation Method