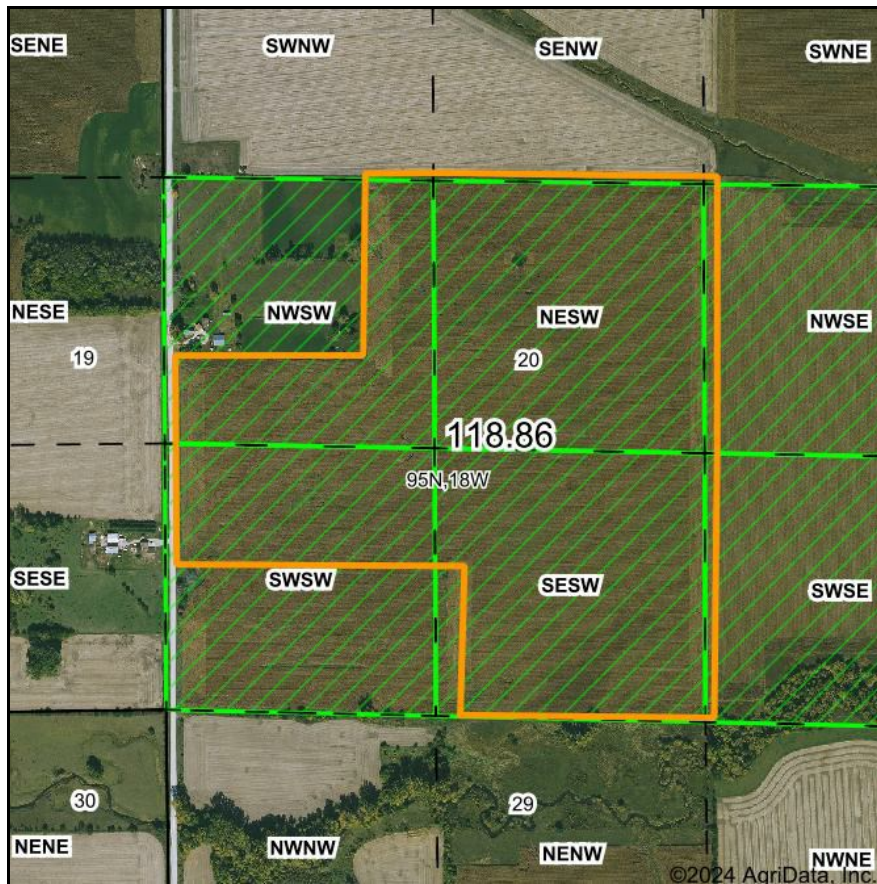
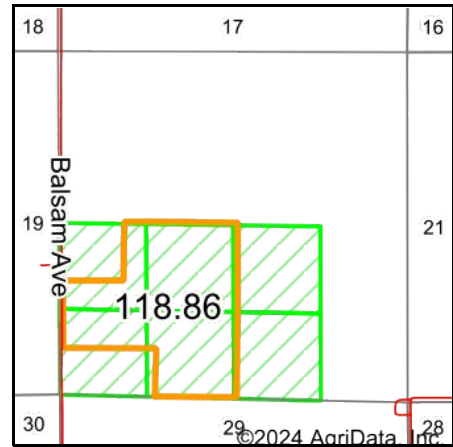


PLSS Legal Description



Map Center: 43° 1' 38.13, -92° 59' 59.25

0ft 804ft 1608ft



Acres: **118.86**
Date: **5/28/2024**
Township: **Rockford**
County: **Floyd**
State: **Iowa**



Maps Provided By:



© AgriData, Inc. 2023 www.AgriDataInc.com



PLSS Source: **Bureau of Land Management (BLM)**

PLSS Note: **BLM contains Government Lots and Quarters. Availability and accuracy will vary by location**

Short Legal:

PT NWSW; E2SW; PT NWSE; PT SWSW; PT SWSE 20-95N-18W

Long Legal:

PART OF THE NW1/4 SW1/4; E1/2 SW1/4; PART OF THE NW1/4 SE1/4; PART OF THE SW1/4 SW1/4; PART OF THE SW1/4 SE1/4 OF SECTION 20, TOWNSHIP 95 NORTH, 18 WEST, FLOYD COUNTY, IOWA