

IOWA  
GREENE  
Form: FSA-156EZ



United States Department of Agriculture  
Farm Service Agency

Abbreviated 156 Farm Record

FARM : 952  
Prepared : 5/29/25 9:10 AM CST  
Crop Year : 2025

Tract 1782 Continued ...

State Conservation	Other Conservation	Effective DCP Cropland	Double Cropped	CRP	MPL	DCP Ag. Rel Activity	SOD
0.00	0.00	148.72	0.00	0.00	0.00	0.00	0.00

DCP Crop Data

Crop Name	Base Acres	CCC-505 CRP Reduction Acres	PLC Yield
Corn	75.70	0.00	139
Soybeans	72.70	0.00	38
TOTAL	148.40	0.00	

NOTES

Tract Number : 1783

Description : SECTION 13 GRANT  
FSA Physical Location : IOWA/GREENE  
ANSI Physical Location : IOWA/GREENE  
BIA Unit Range Number :  
HEL Status : NHEL: No agricultural commodity planted on undetermined fields  
Wetland Status : Wetland determinations not complete  
WL Violations : None  
Owners :  
Other Producers :  
Recon ID : None

Tract Land Data

Farm Land	Cropland	DCP Cropland	WBP	EWP	WRP	GRP	Sugarcane
134.95	110.61	110.61	0.00	0.00	0.00	0.00	0.0
State Conservation	Other Conservation	Effective DCP Cropland	Double Cropped	CRP	MPL	DCP Ag. Rel Activity	SOD
0.00	0.00	110.61	0.00	0.00	0.00	0.00	0.00

DCP Crop Data

Crop Name	Base Acres	CCC-505 CRP Reduction Acres	PLC Yield
Corn	56.00	0.00	139
Soybeans	54.60	0.00	38
TOTAL	110.60	0.00	

NOTES



United States  
Department of  
Agriculture





## Greene County, Iowa

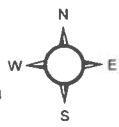


### Legend

Non-Cropland      CRP      Iowa PLSS  
Cropland       Tract Boundary      Iowa Roads

### Wetland Determination

-  Restricted
-  Limited
-  Exempt from Conservation
-  Compliance Provisions



Tract Cropland Total: 110.61 acres

2025 Program Year

Map Created April 22, 2025

Farm 952

Tract 1783

United States Department of Agriculture (USDA) Farm Service Agency (FSA) maps are for FSA Program administration only. This map does not represent a legal survey or reflect actual ownership; rather it depicts the information provided directly from the producer and/or National Agricultural Imagery Program (NAIP) imagery. The producer accepts the data 'as is' and assumes all risks associated with its use. USDA-FSA assumes no responsibility for actual or consequential damage incurred as a result of any user's reliance on this data outside FSA Programs. Wetland identifiers do not represent the size, shape, or specific determination of the area. Refer to your original determination (CPA-026 and attached maps) for exact boundaries and determinations or contact USDA Natural Resources Conservation Service (NRCS).

USDA is an equal opportunity provider, employer, and lender.



4/7/93

Greene

**HIGHLY ERODIBLE LAND AND WETLAND  
CONSERVATION DETERMINATION**

farm 952 tract 1783

**SECTION I - HIGHLY ERODIBLE LAND**

	FIELD NO.(s)	TOTAL ACRES
6. Is soil survey now available for making a highly erodible land determination? Yes <input checked="" type="checkbox"/> No <input type="checkbox"/>		
7. Are there highly erodible soil map units on this farm? Yes <input checked="" type="checkbox"/> No <input type="checkbox"/>		
8. List highly erodible fields that, according to ASCS records, were used to produce an agricultural commodity in any crop year during 1981-1985.		
9. List highly erodible fields that have been or will be converted for the production of agricultural commodities and, according to ASCS records, were not used for this purpose in any crop year during 1981-1985; and were not enrolled in a USDA set-aside or diversion program.		
10. This Highly Erodible Land determination was completed in the: Office <input checked="" type="checkbox"/> Field <input type="checkbox"/>		

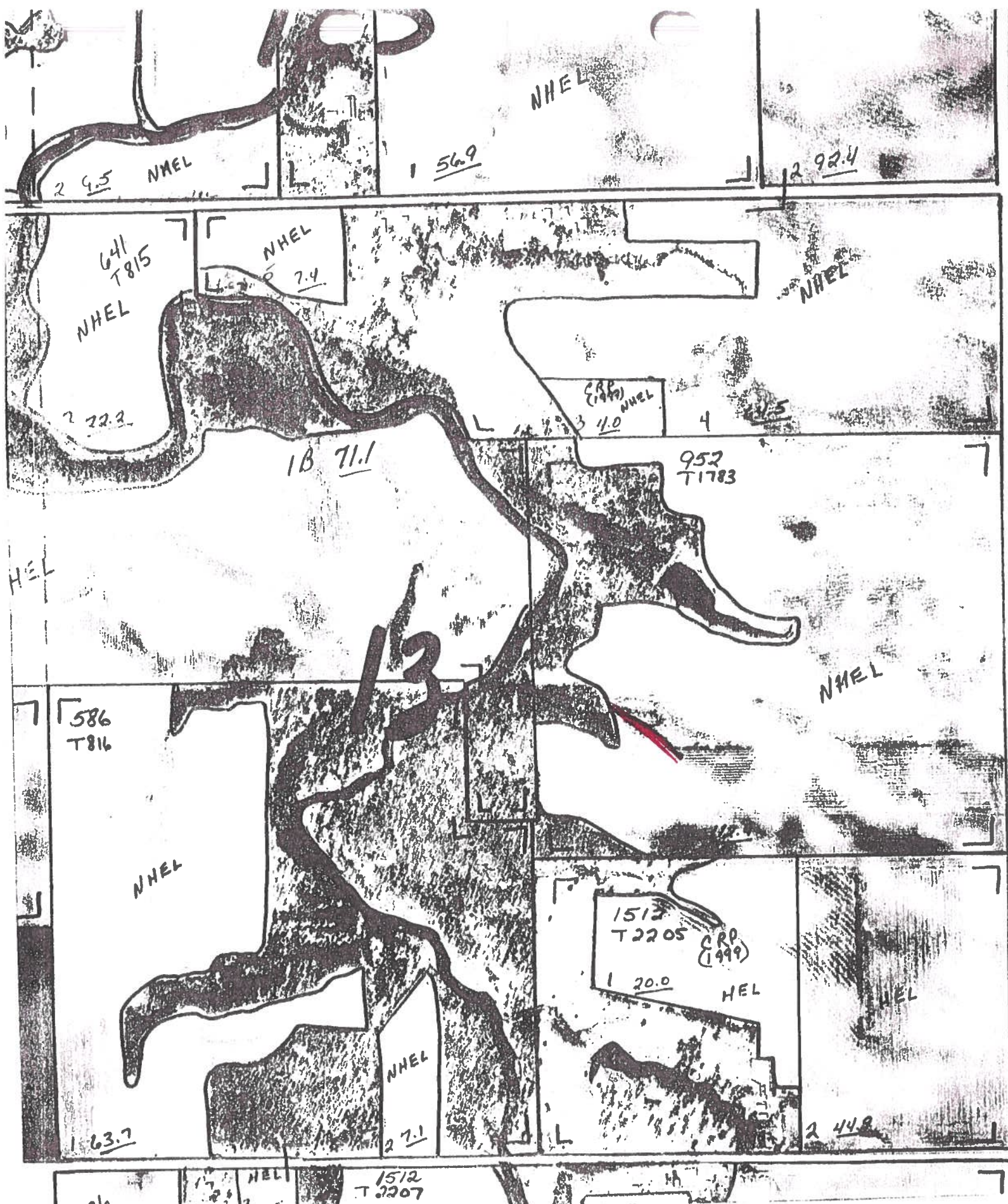
**SECTION II - WETLAND**

	FIELD NO.(s)	TOTAL ACRES
11. Are there hydric soils on this farm? Yes <input checked="" type="checkbox"/> No <input type="checkbox"/>		
12. Wetlands (W), including abandoned wetlands, or Farmed Wetlands (FW) or Farmed Wetlands Pasture (FWP). Wetlands may be farmed under natural conditions. Farmed Wetlands and Farmed Wetlands Pasture may be farmed and maintained in the same manner as they were prior to December 23, 1985, as long as they are not abandoned.		
13. Prior Converted Cropland (PC). Wetlands that were converted prior to December 23, 1985. The use, management, drainage, and alteration of prior converted cropland (PC) are not subject to the wetland conservation provisions unless the area reverts to wetland as a result of abandonment.		
14. Artificial Wetlands (AW). Artificial wetlands includes irrigation-induced wetlands. These wetlands are not subject to the wetland conservation provisions.		
15. Minimal Effect Wetlands (MW). These wetlands are to be farmed according to the minimal-effect agreement signed at the time the minimal-effect determination was made.		
16. Mitigation Wetlands (MIW). Wetlands on which a person is actively mitigating a frequently cropped area or a wetland converted between December 23, 1985 and November 28, 1990.		
17. Restoration with Violation (RVW-year). A restored wetland that was in violation as a result of conversion after November 28, 1990, or the planting of an agricultural commodity or forage crop.		
18. Restoration without Violation (RSW). A restored wetland converted between December 23, 1985 and November 28, 1990, on which an agricultural commodity has not been planted.		
19. Replacement Wetlands (RPW). Wetlands which are converted for purposes other than to increase production, where the wetland values are being replaced at a second site.		
20. Good Faith Wetlands (GFW+year). Wetlands on which ASCS has determined a violation to be in good faith and the wetland has been restored.		
21. Converted Wetlands (CW). Wetlands converted after December 23, 1985 and prior to November 28, 1990. In any year that an agricultural commodity is planted on these Converted Wetlands, you will be ineligible for USDA benefits.		
22. Converted Wetland (CW+year). Wetlands converted after November 28, 1990. You will be ineligible for USDA program benefits until this wetland is restored.		
23. Converted Wetland Non-Agricultural use (CWNA). Wetlands that are converted for trees, fish production, shrubs, cranberries, vineyards or building and road construction.		
24. Converted Wetland Technical Error (CWTE). Wetlands that were converted as a result of incorrect determination by SCS.		
25. The planned alteration measures on wetlands in fields _____ are considered maintenance and are in compliance with FSA.		
26. The planned alteration measures on wetlands in fields _____ are not considered to be maintenance and if installed will cause the area to become a Converted Wetland (CW). See item 22 for information on CW+year.		
27. The wetland determination was completed in the office <input type="checkbox"/> field <input type="checkbox"/> and was delivered <input type="checkbox"/> mailed <input type="checkbox"/> to the person on _____.		
28. Remarks. Area indicated on map (attached) may be tiled, drainage improved without loss of USDA benefits. Check with SCS before draining other areas of this tract.		

Will N. Muhl

4/8/93





NOT TO SCALE (1990 Flight) GREENE COUNTY -- Crop Year 1998 K-8

*elling*

# HIGHLY ERODIBLE LAND AND WETLAND CONSERVATION DETERMINATION

NAME OF USDA AGENCY OR PRODUCER REQUESTING DETERMINATION		2. DATE OF REQUEST	
NAME AND ADDRESS OF PRODUCER [REDACTED]		4. FARM NO. T1783 952	5. COUNTY GREENE

Is a soil survey now available for making a highly erodible land determination?

YES	NO
✓	

Are highly erodible soil map units on this farm?

YES	NO
✓	

a. List highly erodible fields that, according to ASCS records, were used to produce an agricultural commodity in any crop year during 1981-1985.

None

b. Is an approved conservation plan being actively applied on all of these fields? If "no," list the fields (from the ASCS records) on which a plan is not being applied.

a. List highly erodible fields that, according to ASCS records, have been converted for the production of agricultural commodities, were not used for this purpose in any crop year during 1981-1985, and were not enrolled in a USDA set-aside or diversion program.

None

b. Is an approved conservation system being used on these fields? If "no," list the fields (from the ASCS records) on which a system is not being used.

Are there other fields that (1) have highly erodible map units, (2) were not used to produce an agricultural commodity in any crop year after 1980, and (3) were not enrolled in a USDA set-aside or diversion program in any crop year during 1981-1985?

YES	NO
✓	

CERTIFICATION: The conservation plan ☐ and system(s) ☐ were approved by the \_\_\_\_\_ Conservation District on \_\_\_\_\_, 19\_\_\_\_, and conform with the technical requirements of the SCS field office technical guide for the \_\_\_\_\_ District.

Are hydric soils on this farm? If "yes," list the fields (from the ASCS records) in which they occur.

All

YES	NO
✓	

Are wetlands on this farm? If "yes," list the fields, outline the wetland areas within fields on the ASCS photograph(s), and mark with "w".

Are converted wetlands on this farm that have been converted since December 23, 1985? If "yes," list the fields, outline converted wetlands on the ASCS photograph(s), and mark with "cw".

YES	NO
	✓

Are converted wetlands covered by exemptions? If "yes," list those fields, outline the exempt converted wetlands on the ASCS photograph(s), and mark with "ecw". Note the exemptions for each area:

a. Field No. \_\_\_\_\_

c. Field No. \_\_\_\_\_

b. Exemption \_\_\_\_\_

d. Exemption \_\_\_\_\_

6. The wetland determination was done in the office ☒ field ☐.

7. This determination was hand delivered ☐ mailed ☒ to the producer on \_\_\_\_\_ (DATE)

Any producer who does not agree with this determination may request reconsideration from the person making the determination. This request is prerequisite for any further appeal. The request must be in writing and must set forth reasons for the request. It must be received by SCS within 15 days after the producer receives the determination.

18. REMARKS

*Compliance provisions not apply*

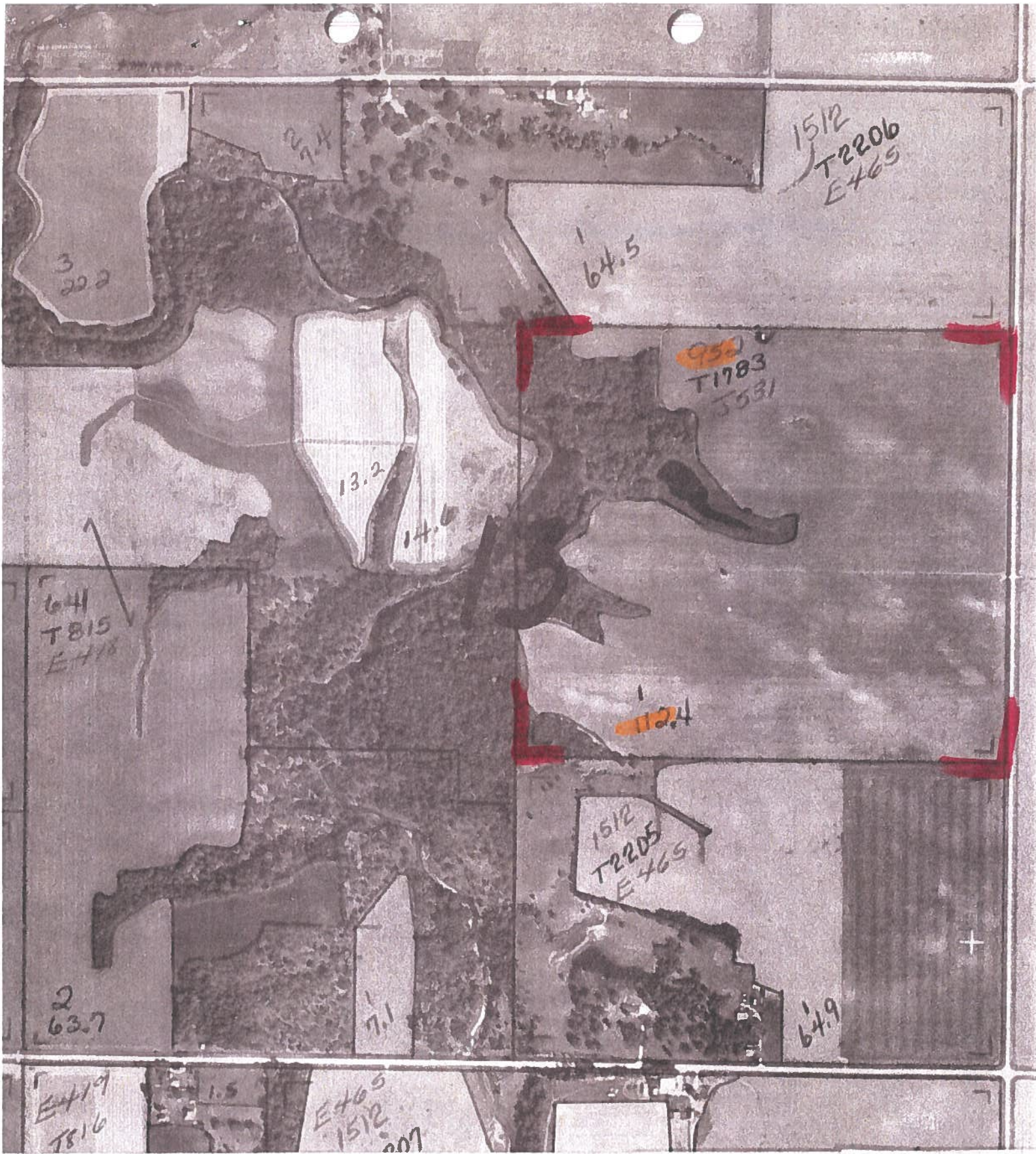
19. SIGNATURE OF SCS DISTRICT CONSERVATIONIST

*B. J. Harris*

DATE

*4/14/87*





NOT TO SCALE (1981) **GREENE**

I-9

9

Grant