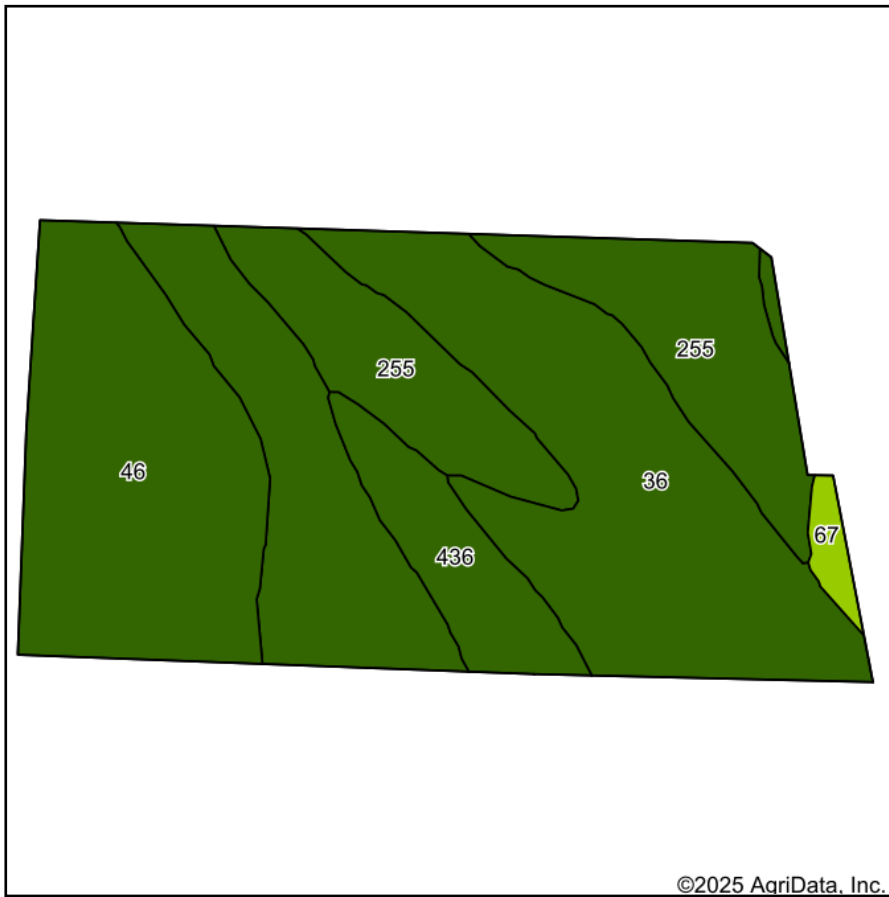
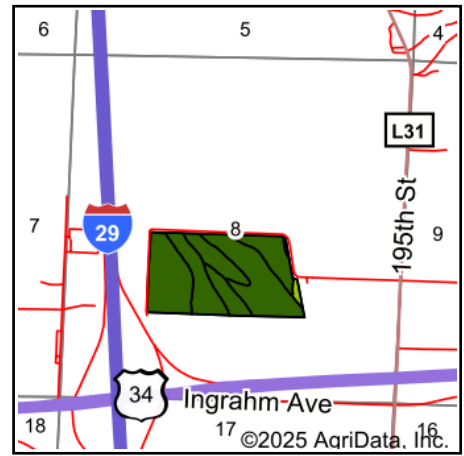


## Soils Map



Soils data provided by USDA and NRCS.



State: **Iowa**  
County: **Mills**  
Location: **8-72N-43W**  
Township: **Plattville**  
Acres: **65.42**  
Date: **2/27/2025**



| Area Symbol: IA129, Soil Area Version: 35 |   |       |                  |             |               |                  |        |
|---|---|-------|------------------|-------------|---------------|------------------|--------|
| Code                                      | Soil Description                                | Acres | Percent of field | CSR2 Legend | Hydric Rating | Non-Irr Class *c | CSR2** |
| 36  | Salix silty clay loam, 0 to 2 percent slopes    | 29.20 | 44.6%            |             | 5             | Iw               | 97     |
| 46  | Keg silt loam, 0 to 2 percent slopes            | 16.54 | 25.3%            |             | 5             | Iw               | 98     |
| 255                                       | Cooper silty clay loam, 0 to 2 percent slopes   | 14.07 | 21.5%            |             | 5             | IIw              | 84     |
| 436                                       | Lakeport silty clay loam, 0 to 2 percent slopes | 4.77  | 7.3%             |             | 5             | Iw               | 86     |
| 67  | Woodbury silty clay, 0 to 2 percent slopes      | 0.84  | 1.3%             |             | 90            | IIIw             | 67     |
| Weighted Average                          |   |       |                  |             |               | 1.24             | 93.3   |

\*\*IA has updated the CSR values for each county to CSR2.

\*c: Using Capabilities Class Dominant Condition Aggregation Method