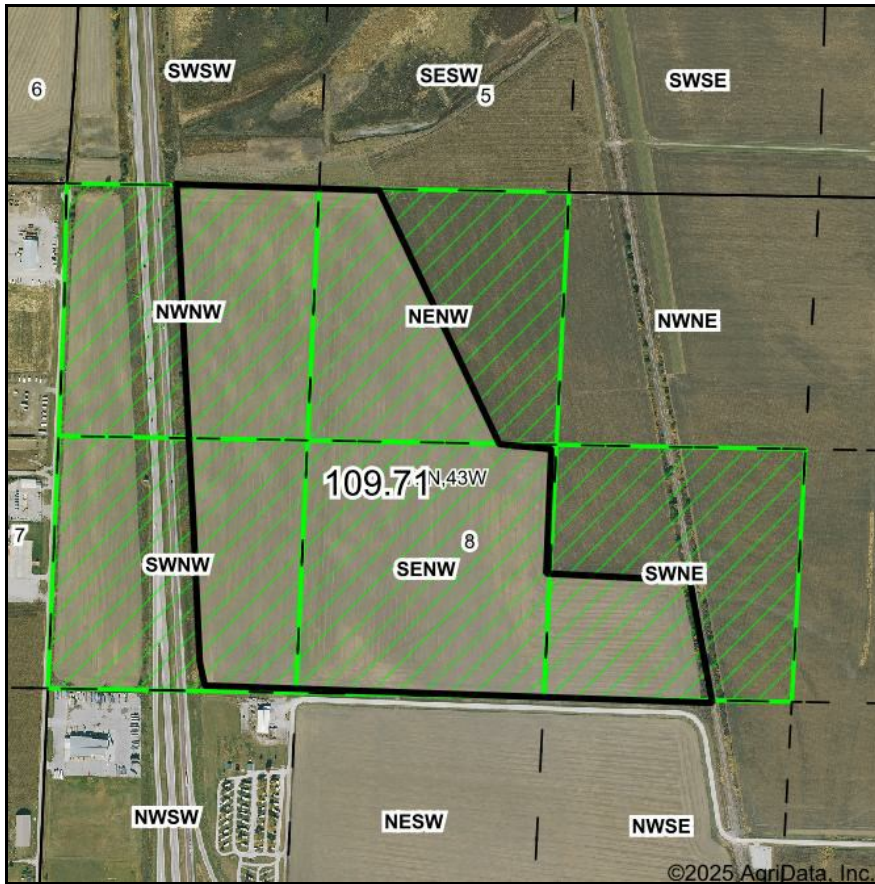
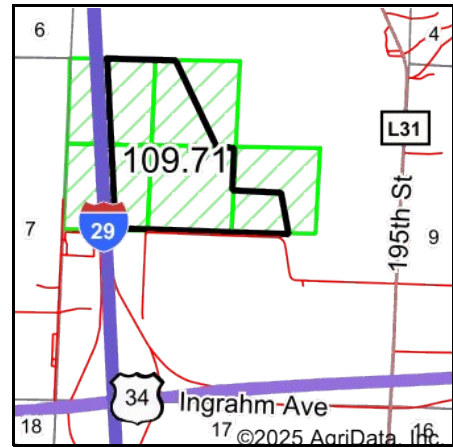


# PLSS Legal Description



Map Center: 41° 3' 23.98, -95° 49' 2.74

0ft 866ft 1731ft



Acres: **109.71**  
Date: **2/21/2025**  
Township: **Plattville**  
County: **Mills**  
State: **Iowa**



Maps Provided By:



PLSS Source: **Bureau of Land Management (BLM)**

PLSS Note: **BLM contains Government Lots and Quarters. Availability and accuracy will vary by location**

Short Legal:

PT NWNW; PT NENW; PT SWNW; SENW; PT SWNE 8-72N-43W

Long Legal:

PART OF THE NW1/4 NW1/4; PART OF THE NE1/4 NW1/4; PART OF THE SW1/4 NW1/4; SE1/4 NW1/4; PART OF THE SW1/4 NE1/4 OF SECTION 8, TOWNSHIP 72 NORTH, 43 WEST, MILLS COUNTY, IOWA