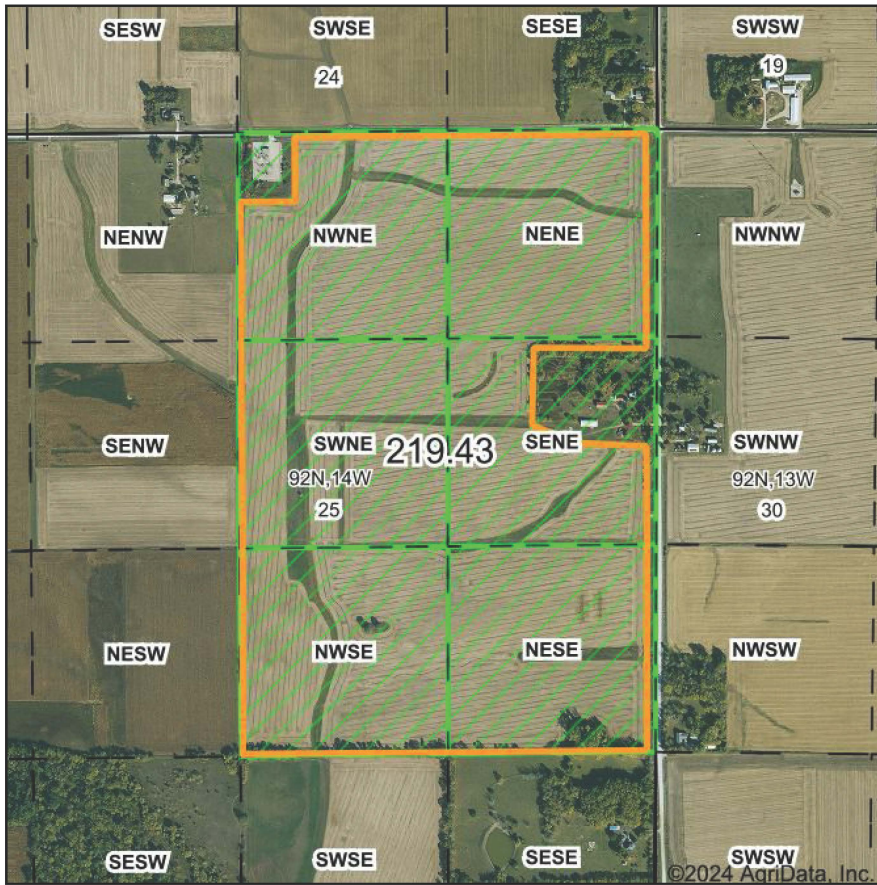
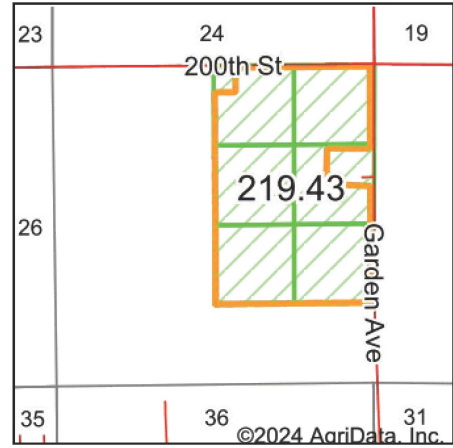


## PLSS Legal Description



Map Center: 42° 45' 11.93, -92° 26' 28.55



Acres: **219.43**  
Date: **10/22/2024**  
Township: **Lafayette**  
County: **Bremer**  
State: **Iowa**



**Maps Provided By:**



PLSS Source: **Bureau of Land Management (BLM)**

**PLSS Note: BLM contains Government Lots and Quarters. Availability and accuracy will vary by location**

Short Legal:

PT NWNE; NENE; SWNE; PT SENE; N2SE 25-92N-14W

Long Legal:

PART OF THE NW1/4 NE1/4; NE1/4 NE1/4; SW1/4 NE1/4; PART OF THE SE1/4 NE1/4; N1/2 SE1/4 OF SECTION 25, TOWNSHIP 92 NORTH, 14 WEST, BREMER COUNTY, IOWA