

IOWA
HARDIN

Form: FSA-156EZ

See Page 4 for non-discriminatory Statements.



United States Department of Agriculture
Farm Service Agency

Abbreviated 156 Farm Record

FARM : 6524

Prepared : 10/3/24 3:23 PM CST

Crop Year : 2025

Operator Name :
CRP Contract Number(s) : None
Recon ID : None
Transferred From : None
ARCPLC G//F Eligibility : Eligible

Farm Land Data

Farmland	Cropland	DCP Cropland	WBP	EWP	WRP	GRP	Sugarcane	Farm Status	Number Of Tracts
244.58	230.13	230.13	0.00	0.00	0.00	0.00	0.0	Active	4
State Conservation	Other Conservation	Effective DCP Cropland	Double Cropped			CRP	MPL	DCP Ag.Rel. Activity	SOD
0.00	0.00	230.13	0.00			0.00	0.00	0.00	0.00

Crop Election Choice

ARC Individual	ARC County	Price Loss Coverage
None	CORN, SOYBN	None

DCP Crop Data

Crop Name	Base Acres	CCC-505 CRP Reduction Acres	PLC Yield	HIP
Corn	152.60	0.00	159	
Soybeans	55.60	0.00	47	
TOTAL	208.20	0.00		

NOTES

--

Tract Number : 10274

Description : 1 ELLIS NE1/4
FSA Physical Location : IOWA/HARDIN
ANSI Physical Location : IOWA/HARDIN
BIA Unit Range Number :
HEL Status : NHEL: No agricultural commodity planted on undetermined fields
Wetland Status : Wetland determinations not complete
WL Violations : None
Owners :
Other Producers : None
Recon ID : None

Tract Land Data

Farm Land	Cropland	DCP Cropland	WBP	EWP	WRP	GRP	Sugarcane
66.13	65.74	65.74	0.00	0.00	0.00	0.00	0.0



Abbreviated 156 Farm Record

Tract 10274 Continued ...

State Conservation	Other Conservation	Effective DCP Cropland	Double Cropped	CRP	MPL	DCP Ag. Rel Activity	SOD
0.00	0.00	65.74	0.00	0.00	0.00	0.00	0.00

DCP Crop Data

Crop Name	Base Acres	CCC-505 CRP Reduction Acres	PLC Yield
Corn	45.40	0.00	159
Soybeans	17.00	0.00	47
TOTAL	62.40	0.00	

NOTES

--

Tract Number : 10275

Description : 1 ELLIS E1/3 NE1/4
FSA Physical Location : IOWA/HARDIN
ANSI Physical Location : IOWA/HARDIN
BIA Unit Range Number :
HEL Status : NHEL: No agricultural commodity planted on undetermined fields
Wetland Status : Wetland determinations not complete
WL Violations : None
Owners :
Other Producers : None
Recon ID : None

Tract Land Data

Farm Land	Cropland	DCP Cropland	WBP	EWP	WRP	GRP	Sugarcane
34.31	34.31	34.31	0.00	0.00	0.00	0.00	0.0
State Conservation	Other Conservation	Effective DCP Cropland	Double Cropped	CRP	MPL	DCP Ag. Rel Activity	SOD
0.00	0.00	34.31	0.00	0.00	0.00	0.00	0.00

DCP Crop Data

Crop Name	Base Acres	CCC-505 CRP Reduction Acres	PLC Yield
Corn	23.70	0.00	159
Soybeans	8.90	0.00	47
TOTAL	32.60	0.00	

NOTES

--



Abbreviated 156 Farm Record

Tract Number : 10986

Description : 1 Ellis NW1/4 & NE1/4
FSA Physical Location : IOWA/HARDIN
ANSI Physical Location : IOWA/HARDIN
BIA Unit Range Number :
HEL Status : NHEL: No agricultural commodity planted on undetermined fields
Wetland Status : Wetland determinations not complete
WL Violations : None
Owners :
Other Producers : None
Recon ID : 19-083-2008-146

Tract Land Data

Farm Land	Cropland	DCP Cropland	WBP	EWP	WRP	GRP	Sugarcane
117.23	103.17	103.17	0.00	0.00	0.00	0.00	0.0
State Conservation	Other Conservation	Effective DCP Cropland	Double Cropped	CRP	MPL	DCP Ag. Rel Activity	SOD
0.00	0.00	103.17	0.00	0.00	0.00	0.00	0.00

DCP Crop Data

Crop Name	Base Acres	CCC-505 CRP Reduction Acres	PLC Yield
Corn	67.60	0.00	159
Soybeans	24.00	0.00	47
TOTAL	91.60	0.00	

NOTES

Tract Number : 10987

Description : 1 Ellis Nw1/4 & NE 1/4
FSA Physical Location : IOWA/HARDIN
ANSI Physical Location : IOWA/HARDIN
BIA Unit Range Number :
HEL Status : NHEL: No agricultural commodity planted on undetermined fields
Wetland Status : Wetland determinations not complete
WL Violations : None
Owners :
Other Producers : None
Recon ID : 19-083-2008-146

Tract Land Data

Farm Land	Cropland	DCP Cropland	WBP	EWP	WRP	GRP	Sugarcane
26.91	26.91	26.91	0.00	0.00	0.00	0.00	0.0



Abbreviated 156 Farm Record

Tract 10987 Continued ...

State Conservation	Other Conservation	Effective DCP Cropland	Double Cropped	CRP	MPL	DCP Ag. Rel Activity	SOD
0.00	0.00	26.91	0.00	0.00	0.00	0.00	0.00

DCP Crop Data

Crop Name	Base Acres	CCC-505 CRP Reduction Acres	PLC Yield
Corn	15.90	0.00	159
Soybeans	5.70	0.00	47
TOTAL	21.60	0.00	

NOTES

--

In accordance with Federal civil rights law and U.S. Department of Agriculture (USDA) civil rights regulations and policies, the USDA, its Agencies, offices, and employees, and institutions participating in or administering USDA programs are prohibited from discriminating based on race, color, national origin, religion, sex, gender identity (including gender expression), sexual orientation, disability, age, marital status, family/parental status, income derived from a public assistance program, political beliefs, or reprisal or retaliation for prior civil rights activity, in any program or activity conducted or funded by USDA (not all bases apply to all programs). Remedies and complaint filing deadlines vary by program or incident.

Persons with disabilities who require alternative means of communication for program information (e.g., Braille, large print, audiotape, American Sign Language, etc.) should contact the responsible Agency or USDA's TARGET Center at (202) 720-2600 (voice and TTY) or contact USDA through the Federal Relay Service at (800) 877-8339. Additionally, program information may be made available in languages other than English.

To file a program discrimination complaint, complete the USDA Program Discrimination Complaint Form, AD-3027, found online at http://www.ascr.usda.gov/complaint_filing_cust.html and at any USDA office or write a letter addressed to USDA and provide in the letter all of the information requested in the form. To request a copy of the complaint form, call (866) 632-9992. Submit your completed form or letter to USDA by: (1) mail: U.S. Department of Agriculture Office of the Assistant Secretary for Civil Rights 1400 Independence Avenue, SW Washington, D.C. 20250-9410; (2) fax: (202) 690-7442; or (3) e-mail: program.intake@usda.gov. USDA is an equal opportunity provider, employer, and lender.



United States
Department of
Agriculture

Hardin County, Iowa



Legend

- | | | |
|--------------|----------------|------------|
| Non-Cropland | CRP | Iowa PLSS |
| Cropland | Tract Boundary | Iowa Roads |

Wetland Determination

- Restricted
- Limited
- Exempt from Conservation Compliance Provisions

Tract Cropland Total: 65.74 acres

2024 Program Year

Map Created April 16, 2024

Farm **6524**
Tract **10274**

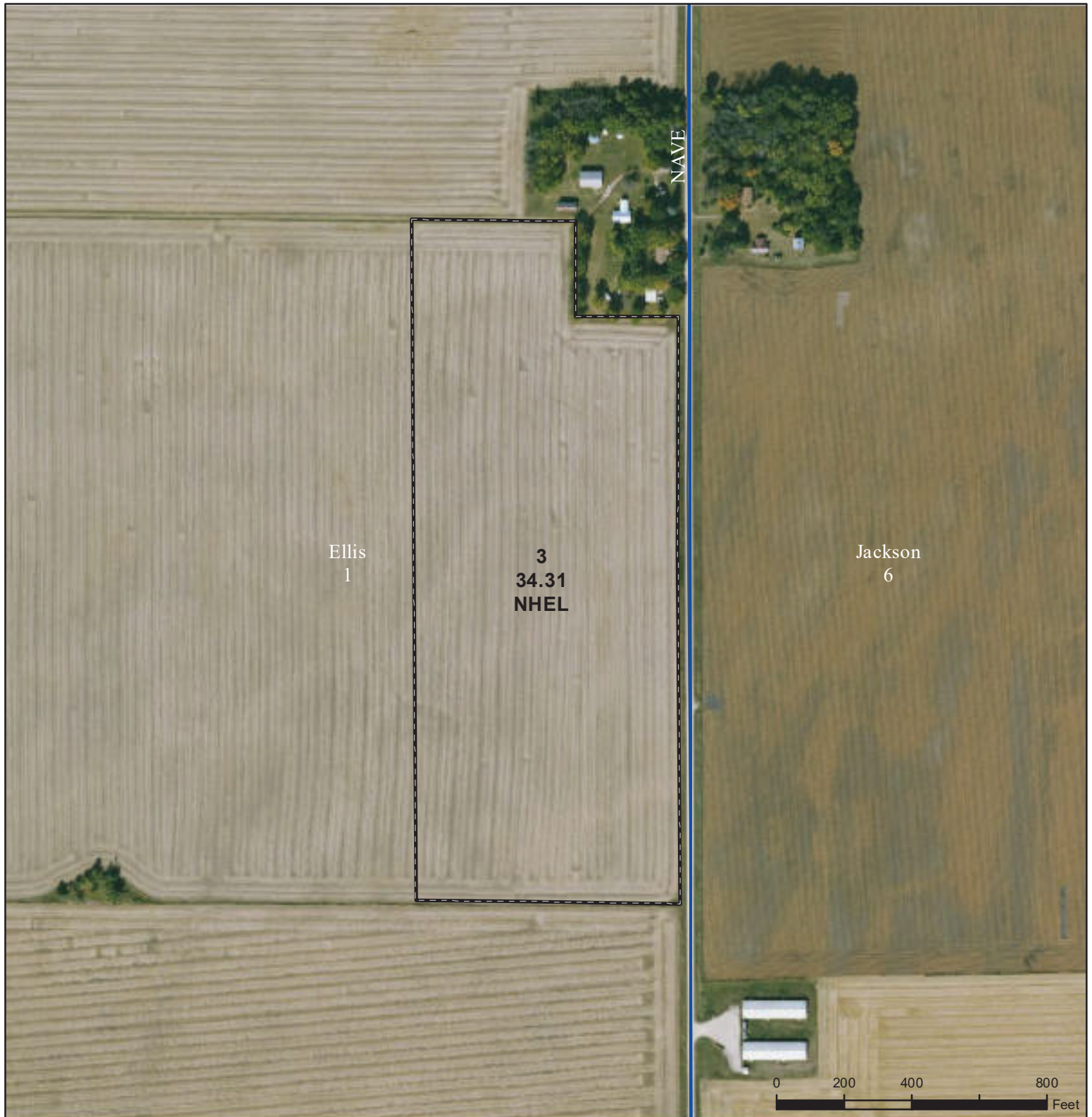
United States Department of Agriculture (USDA) Farm Service Agency (FSA) maps are for FSA Program administration only. This map does not represent a legal survey or reflect actual ownership; rather it depicts the information provided directly from the producer and/or National Agricultural Imagery Program (NAIP) imagery. The producer accepts the data 'as is' and assumes all risks associated with its use. USDA-FSA assumes no responsibility for actual or consequential damage incurred as a result of any user's reliance on this data outside FSA Programs. Wetland identifiers do not represent the size, shape, or specific determination of the area. Refer to your original determination (CPA-026 and attached maps) for exact boundaries and determinations or contact USDA Natural Resources Conservation Service (NRCS).

USDA is an equal opportunity provider, employer, and lender.



United States
Department of
Agriculture

Hardin County, Iowa



Legend

- | | | |
|--------------|----------------|------------|
| Non-Cropland | CRP | Iowa PLSS |
| Cropland | Tract Boundary | Iowa Roads |

Wetland Determination

- Restricted
- Limited
- Exempt from Conservation Compliance Provisions

Tract Cropland Total: 34.31 acres

2024 Program Year

Map Created April 16, 2024

Farm **6524**
Tract **10275**

United States Department of Agriculture (USDA) Farm Service Agency (FSA) maps are for FSA Program administration only. This map does not represent a legal survey or reflect actual ownership; rather it depicts the information provided directly from the producer and/or National Agricultural Imagery Program (NAIP) imagery. The producer accepts the data 'as is' and assumes all risks associated with its use. USDA-FSA assumes no responsibility for actual or consequential damage incurred as a result of any user's reliance on this data outside FSA Programs. Wetland identifiers do not represent the size, shape, or specific determination of the area. Refer to your original determination (CPA-026 and attached maps) for exact boundaries and determinations or contact USDA Natural Resources Conservation Service (NRCS).

USDA is an equal opportunity provider, employer, and lender.



United States
Department of
Agriculture

Hardin County, Iowa



Legend

- Non-Cropland
- Cropland
- CRP
- Tract Boundary
- Iowa PLSS
- Iowa Roads

Wetland Determination

- Restricted
- Limited
- Exempt from Conservation Compliance Provisions

United States Department of Agriculture (USDA) Farm Service Agency (FSA) maps are for FSA Program administration only. This map does not represent a legal survey or reflect actual ownership; rather it depicts the information provided directly from the producer and/or National Agricultural Imagery Program (NAIP) imagery. The producer accepts the data 'as is' and assumes all risks associated with its use. USDA-FSA assumes no responsibility for actual or consequential damage incurred as a result of any user's reliance on this data outside FSA Programs. Wetland identifiers do not represent the size, shape, or specific determination of the area. Refer to your original determination (CPA-026 and attached maps) for exact boundaries and determinations or contact USDA Natural Resources Conservation Service (NRCS).

USDA is an equal opportunity provider, employer, and lender.

2024 Program Year

Map Created April 16, 2024

Farm **6524**
Tract **10986**

Tract Cropland Total: 103.17 acres



United States
Department of
Agriculture

Hardin County, Iowa



Legend

Non-Cropland	CRP	Iowa PLSS
Cropland	Tract Boundary	Iowa Roads

Wetland Determination

- Restricted
- Limited
- Exempt from Conservation Compliance Provisions

Tract Cropland Total: 26.91 acres

2024 Program Year

Map Created April 16, 2024

Farm **6524**
Tract **10987**

United States Department of Agriculture (USDA) Farm Service Agency (FSA) maps are for FSA Program administration only. This map does not represent a legal survey or reflect actual ownership; rather it depicts the information provided directly from the producer and/or National Agricultural Imagery Program (NAIP) imagery. The producer accepts the data 'as is' and assumes all risks associated with its use. USDA-FSA assumes no responsibility for actual or consequential damage incurred as a result of any user's reliance on this data outside FSA Programs. Wetland identifiers do not represent the size, shape, or specific determination of the area. Refer to your original determination (CPA-026 and attached maps) for exact boundaries and determinations or contact USDA Natural Resources Conservation Service (NRCS).

USDA is an equal opportunity provider, employer, and lender.