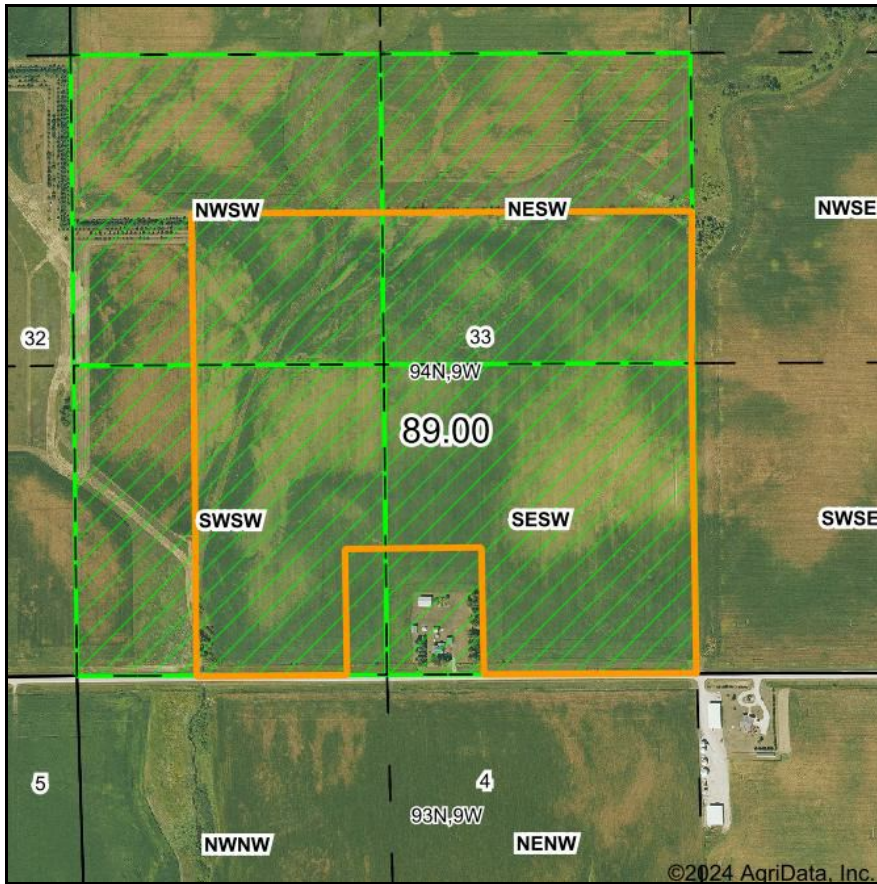
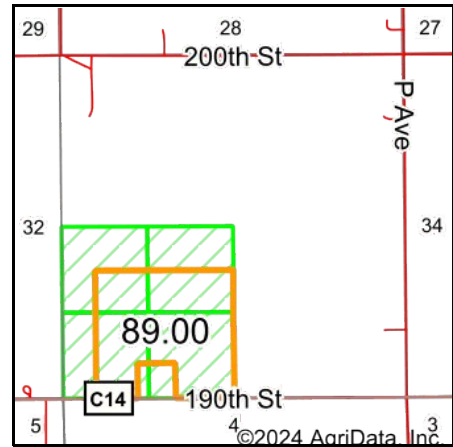


# PLSS Legal Description



Map Center: 42° 54' 33.72, -91° 55' 4.74

0ft 699ft 1398ft



Acres: **89**  
Date: **7/25/2024**  
Township: **Windsor**  
County: **Fayette**  
State: **Iowa**



Maps Provided By:



© AgriData, Inc. 2023

www.AgriDataInc.com



PLSS Source: **Bureau of Land Management (BLM)**

PLSS Note: **BLM contains Government Lots and Quarters. Availability and accuracy will vary by location**

Short Legal:

PT NWSW; PT NESW; PT SWSW; PT SESW 33-94N-9W

Long Legal:

PART OF THE NW1/4 SW1/4; PART OF THE NE1/4 SW1/4; PART OF THE SW1/4 SW1/4; PART OF THE SE1/4 SW1/4 OF SECTION 33, TOWNSHIP 94 NORTH, 9 WEST, FAYETTE COUNTY, IOWA