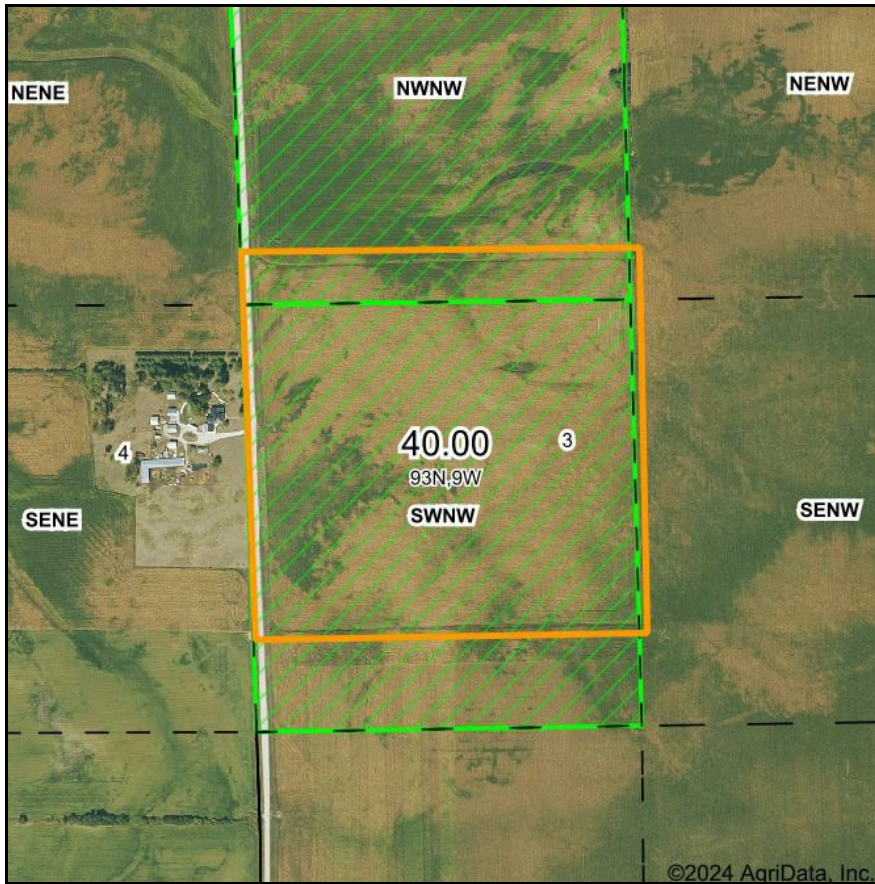
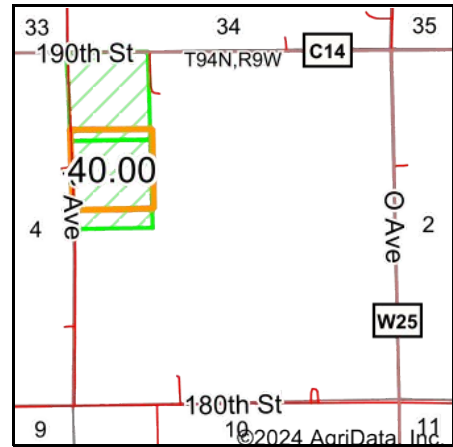


PLSS Legal Description



Map Center: 42° 54' 4.28, -91° 54' 5.28

0ft 554ft 1108ft



Acres: **40**
Date: **7/12/2024**
Township: **Center**
County: **Fayette**
State: **Iowa**



Maps Provided By:



PLSS Source: **Bureau of Land Management (BLM)**

PLSS Note: **BLM contains Government Lots and Quarters. Availability and accuracy will vary by location**

Short Legal:

PT NWNW; PT SWNW 3-93N-9W

Long Legal:

PART OF THE NW1/4 NW1/4; PART OF THE SW1/4 NW1/4 OF SECTION 3, TOWNSHIP 93 NORTH, 9 WEST, FAYETTE COUNTY, IOWA