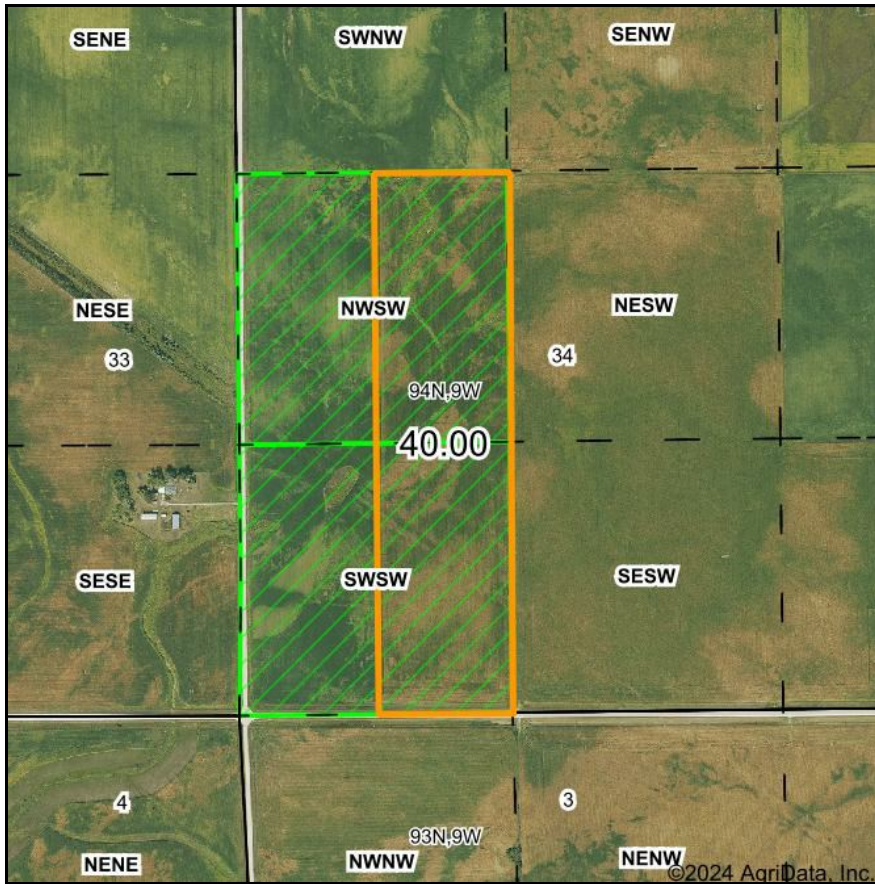
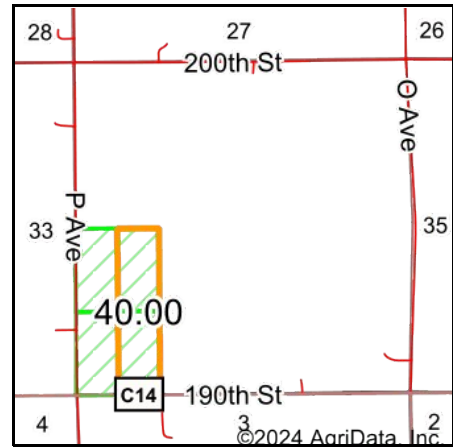


PLSS Legal Description



Map Center: 42° 54' 36.26, -91° 54' 1.19

0ft 801ft 1602ft



Acres: **40**
Date: **7/12/2024**
Township: **Windsor**
County: **Fayette**
State: **Iowa**



Maps Provided By:



PLSS Source: **Bureau of Land Management (BLM)**
PLSS Note: **BLM contains Government Lots and Quarters. Availability and accuracy will vary by location**

Short Legal:

PT NWSW; PT SWSW 34-94N-9W

Long Legal:

PART OF THE NW1/4 SW1/4; PART OF THE SW1/4 SW1/4 OF SECTION 34, TOWNSHIP 94 NORTH, 9 WEST, FAYETTE COUNTY, IOWA