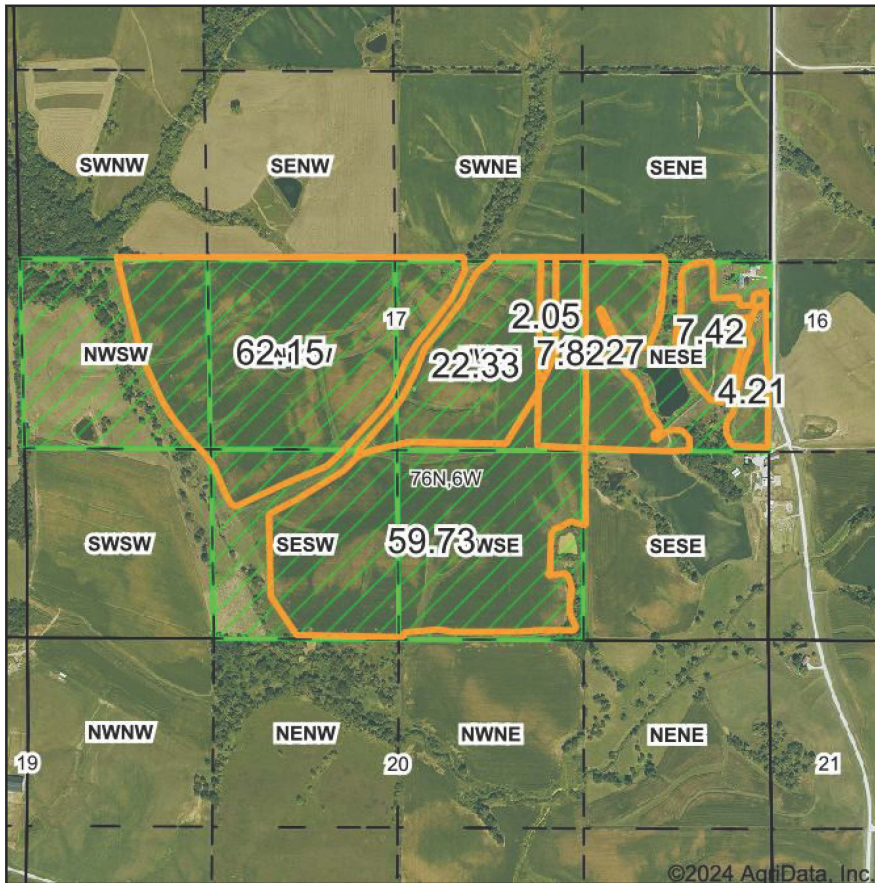
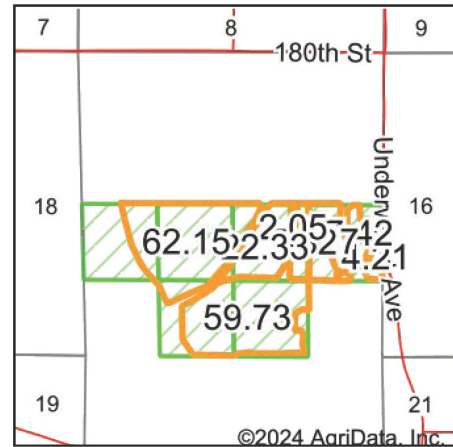


PLSS Legal Description



Map Center: 41° 23' 2.95, -91° 34' 7.94

0ft 1145ft 2290ft



Acres: **179.98**
Date: **6/13/2024**
Township: **Highland**
County: **Washington**
State: **Iowa**



Maps Provided By:



© AgriData, Inc. 2023

www.AgriDataInc.com



PLSS Source: **Bureau of Land Management (BLM)**

PLSS Note: **BLM contains Government Lots and Quarters. Availability and accuracy will vary by location**

Short Legal:

PT NWSW; NESW; NWSE; PT NESE; PT SESW; PT SWSE 17-76N-6W

Long Legal:

PART OF THE NW1/4 SW1/4; NE1/4 SW1/4; NW1/4 SE1/4; PART OF THE NE1/4 SE1/4; PART OF THE SE1/4 SW1/4; PART OF THE SW1/4 SE1/4 OF SECTION 17, TOWNSHIP 76 NORTH, 6 WEST, WASHINGTON COUNTY, IOWA