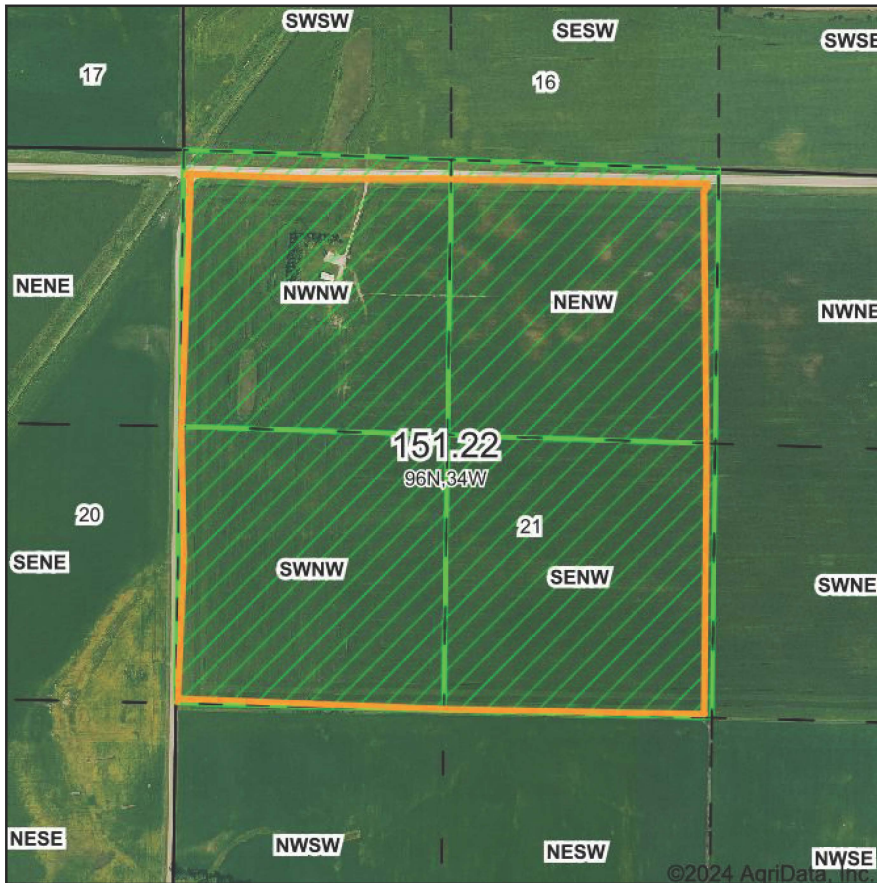
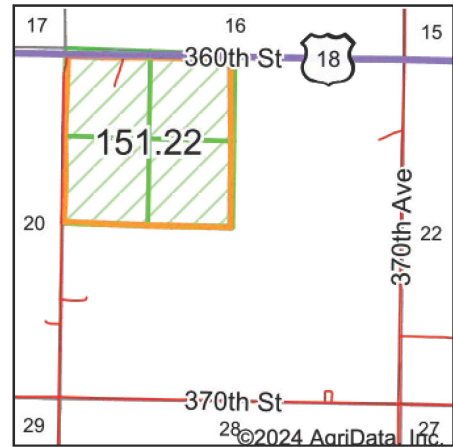


# PLSS Legal Description



Map Center: 43° 7' 22.92, -94° 52' 16.34

0ft 801ft 1602ft



Acres: **151.22**  
Date: **4/23/2024**  
Township: **Highland**  
County: **Palo Alto**  
State: **Iowa**



Maps Provided By:



PLSS Source: **Bureau of Land Management (BLM)**

PLSS Note: **BLM contains Government Lots and Quarters. Availability and accuracy will vary by location**

Short Legal:

NWNW; PT NENW; S2NW 21-96N-34W

Long Legal:

NW1/4 NW1/4; PART OF THE NE1/4 NW1/4; S1/2 NW1/4 OF SECTION 21, TOWNSHIP 96 NORTH, 34 WEST, PALO ALTO COUNTY, IOWA