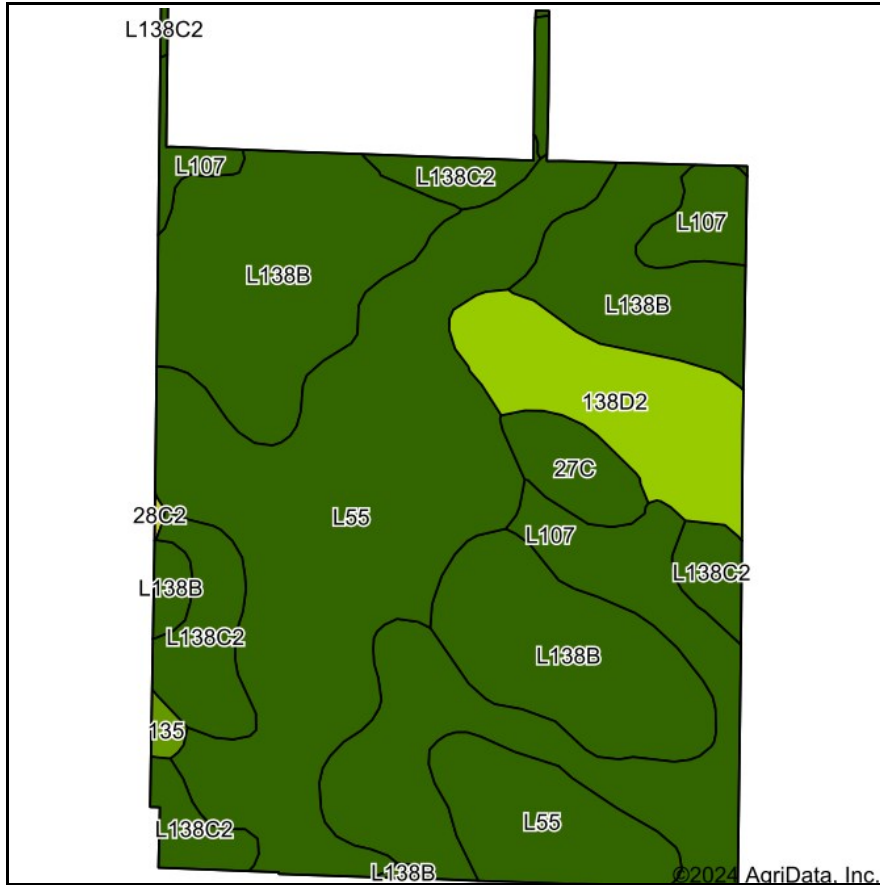
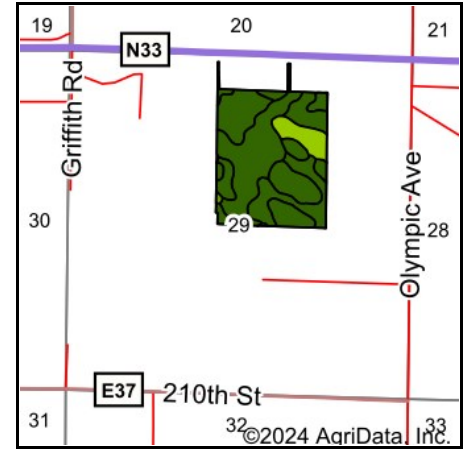


Soils Map



Soils data provided by USDA and NRCS.



State: **Iowa**
 County: **Carroll**
 Location: **29-84N-34W**
 Township: **Grant**
 Acres: **82.26**
 Date: **3/21/2024**



Maps Provided By:

 CUSTOMIZED ONLINE MAPPING
 © AgriData, Inc. 2023 www.AgriDataInc.com



Area Symbol: IA027, Soil Area Version: 28

Code	Soil Description	Acres	Percent of field	CSR2 Legend	Non-Irr Class *c	CSR2**	CSR
L55	Nicollet loam, 1 to 3 percent slopes	28.64	34.8%		le	91	
L138B	Clarion loam, Bemis moraine, 2 to 6 percent slopes	24.10	29.3%		lle	88	
L107	Webster clay loam, Bemis moraine, 0 to 2 percent slopes	14.20	17.3%		llw	88	
138D2	Clarion loam, 9 to 14 percent slopes, moderately eroded	6.55	8.0%		llle	52	54
L138C2	Clarion loam, Bemis moraine, 6 to 10 percent slopes, moderately eroded	6.45	7.8%		llle	83	
27C	Terril loam, 5 to 9 percent slopes	2.00	2.4%		llle	82	65
135	Coland clay loam, 0 to 2 percent slopes, occasionally flooded	0.32	0.4%		llw	76	78
Weighted Average					1.83	85.6	*-

Soil data provided by USDA and NRCS.

*- CSR weighted average cannot be calculated on the current soils data, use prior data version for csr values.

*c: Using Capabilities Class Dominant Condition Aggregation Method