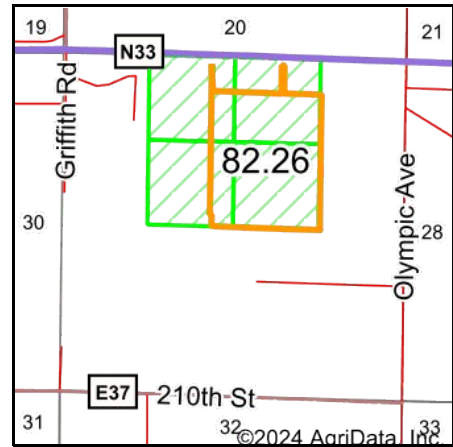


# PLSS Legal Description



Map Center: 42° 3' 37.57, -94° 49' 51.24

0ft 772ft 1544ft



Acres: **82.26**  
Date: **3/21/2024**  
Township: **Grant**  
County: **Carroll**  
State: **Iowa**



**WHITAKER MARKETING GROUP**  
AUCTIONS | REAL ESTATE

Maps Provided By:



**surety**  
CUSTOMIZED ONLINE MAPPING

© AgriData, Inc. 2023

www.AgriDataInc.com



PLSS Source: **Bureau of Land Management (BLM)**

PLSS Note: **BLM contains Government Lots and Quarters. Availability and accuracy will vary by location**

Short Legal:

PT NENW; PT NWNE; PT SENW; SWNE 29-84N-34W

Long Legal:

PART OF THE NE1/4 NW1/4; PART OF THE NW1/4 NE1/4; PART OF THE SE1/4 NW1/4; SW1/4 NE1/4 OF SECTION 29, TOWNSHIP 84 NORTH, 34 WEST, CARROLL COUNTY, IOWA