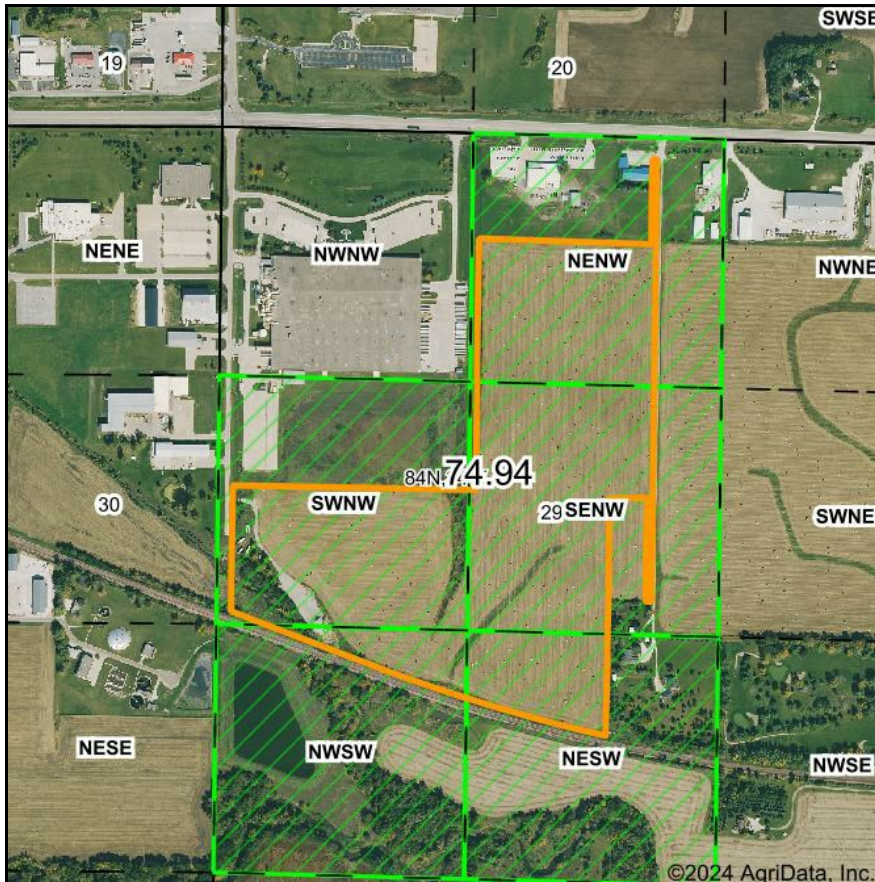


PLSS Legal Description



Map Center: 42° 3' 34.47, -94° 50' 15.77

0ft 865ft 1731ft



Acres: 74.94
Date: 3/21/2024
Township: Carroll
County: Carroll
State: Iowa

 **WHITAKER MARKETING GROUP**
AUCTIONS | REAL ESTATE

Maps Provided By:

 **surety**
CUSTOMIZED ONLINE MAPPING
© AgriData, Inc. 2023 www.AgriDataInc.com



PLSS Source: **Bureau of Land Management (BLM)**

PLSS Note: **BLM contains Government Lots and Quarters. Availability and accuracy will vary by location**

Short Legal:

PT NENW; PT SWNW; PT SENW; PT NWSW; PT NESW 29-84N-34W

Long Legal:

PART OF THE NE1/4 NW1/4; PART OF THE SW1/4 NW1/4; PART OF THE SE1/4 NW1/4; PART OF THE NW1/4 SW1/4; PART OF THE NE1/4 SW1/4 OF SECTION 29, TOWNSHIP 84 NORTH, 34 WEST, CARROLL COUNTY, IOWA