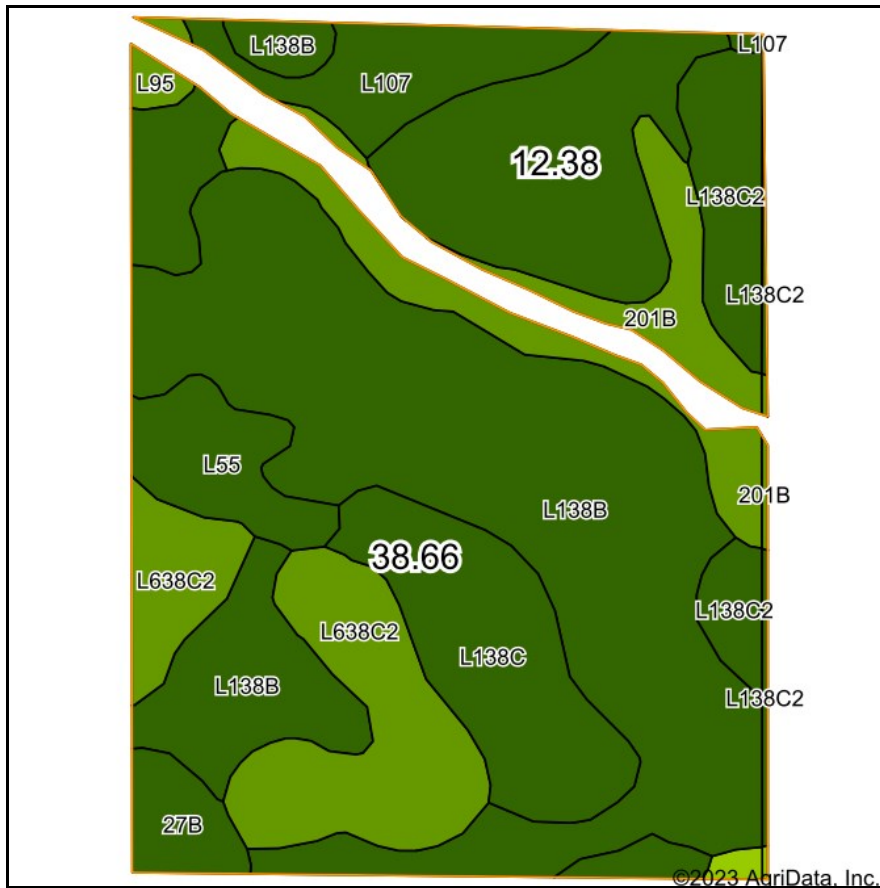
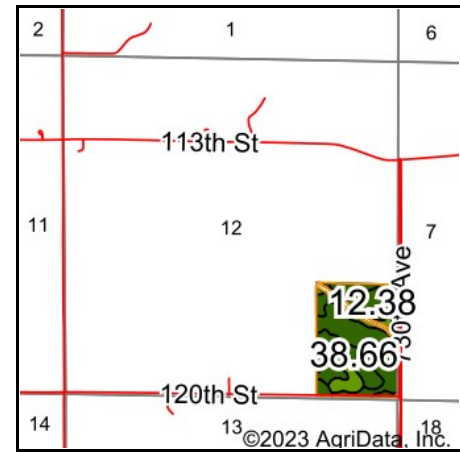


# Soils Map



Soils data provided by USDA and NRCS.



State: **Iowa**  
 County: **Story**  
 Location: **12-85N-21W**  
 Township: **Lincoln**  
 Acres: **51.04**  
 Date: **9/22/2023**



Area Symbol: IA127, Soil Area Version: 27  
 Area Symbol: IA169, Soil Area Version: 34

Code	Soil Description	Acres	Percent of field	CSR2 Legend	Non-Irr Class *c	CSR2**	CSR
L138B	Clarion loam, Bemis moraine, 2 to 6 percent slopes	26.07	51.1%		Ile	88	
L638C2	Clarion-Storden complex, Bemis moraine, 6 to 10 percent slopes, moderately eroded	5.79	11.3%		IIle	75	
L138C	Clarion loam, Bemis moraine, 6 to 10 percent slopes	4.63	9.1%		IIle	84	
201B	Coland-Terril complex, 1 to 5 percent slopes	3.85	7.5%		IIlw	76	40
L107	Webster clay loam, Bemis moraine, 0 to 2 percent slopes	3.72	7.3%		IIlw	88	
L138C2	Clarion loam, Bemis moraine, 6 to 10 percent slopes, moderately eroded	2.67	5.2%		IIle	83	
L55	Nicollet loam, 1 to 3 percent slopes	1.98	3.9%		Ile	91	
27B	Terril loam, 2 to 6 percent slopes	1.49	2.9%		Ile	87	86
L95	Harps clay loam, Bemis moraine, 0 to 2 percent slopes	0.32	0.6%		IIlw	75	
L138C2	Clarion loam, Bemis moraine, 6 to 10 percent slopes, moderately eroded	0.28	0.5%		IIle	83	
203	Cylinder loam, 0 to 2 percent slopes	0.15	0.3%		IIs	58	82
201B	Coland-Terril complex, 2 to 5 percent slopes	0.09	0.2%		IIlw	75	67
<b>Weighted Average</b>					<b>2.22</b>	<b>84.9</b>	<b>*-</b>

\*\*IA has updated the CSR values for each county to CSR2.

\*- CSR weighted average cannot be calculated on the current soils data, use prior data version for csr values.

\*c: Using Capabilities Class Dominant Condition Aggregation Method