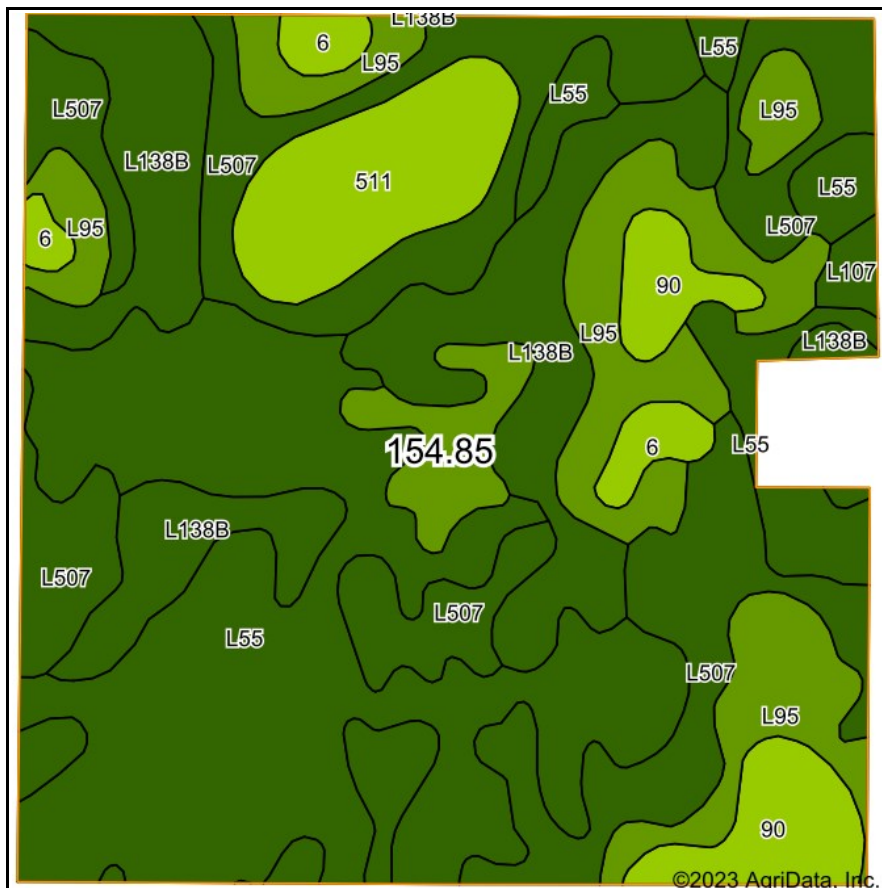
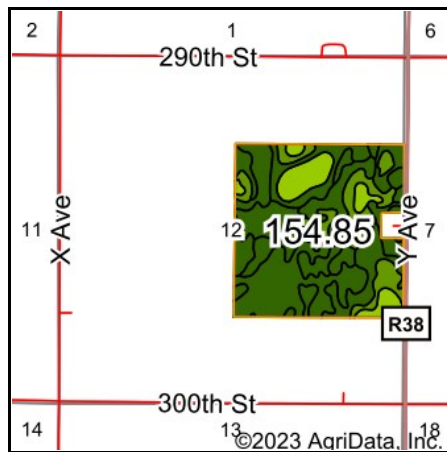


Soils Map



Soils data provided by USDA and NRCS.



State: **Iowa**
 County: **Boone**
 Location: **12-82N-25W**
 Township: **Garden**
 Acres: **154.85**
 Date: **9/13/2023**



Maps Provided By:

 CUSTOMIZED ONLINE MAPPING
 © AgriData, Inc. 2023 www.AgriDataInc.com



Area Symbol: IA015, Soil Area Version: 30

Code	Soil Description	Acres	Percent of field	CSR2 Legend	Non-Irr Class *c	CSR2**	CSR
L55	Nicollet loam, 1 to 3 percent slopes	49.77	32.1%		le	91	
L507	Canisteo clay loam, Bemis moraine, 0 to 2 percent slopes	37.64	24.3%		llw	87	
L138B	Clarion loam, Bemis moraine, 2 to 6 percent slopes	25.08	16.2%		lle	88	
L95	Harps clay loam, Bemis moraine, 0 to 2 percent slopes	22.88	14.8%		llw	75	
511	Blue Earth mucky silt loam, 0 to 1 percent slopes	8.72	5.6%		lllw	66	56
90	Okoboji mucky silt loam, 0 to 1 percent slopes	6.74	4.4%		lllw	56	61
6	Okoboji silty clay loam, 0 to 1 percent slopes	3.08	2.0%		lllw	59	58
L107	Webster clay loam, Bemis moraine, 0 to 2 percent slopes	0.94	0.6%		llw	88	
Weighted Average					1.80	83.6	*-

**IA has updated the CSR values for each county to CSR2.

*- CSR weighted average cannot be calculated on the current soils data, use prior data version for csr values.

*c: Using Capabilities Class Dominant Condition Aggregation Method