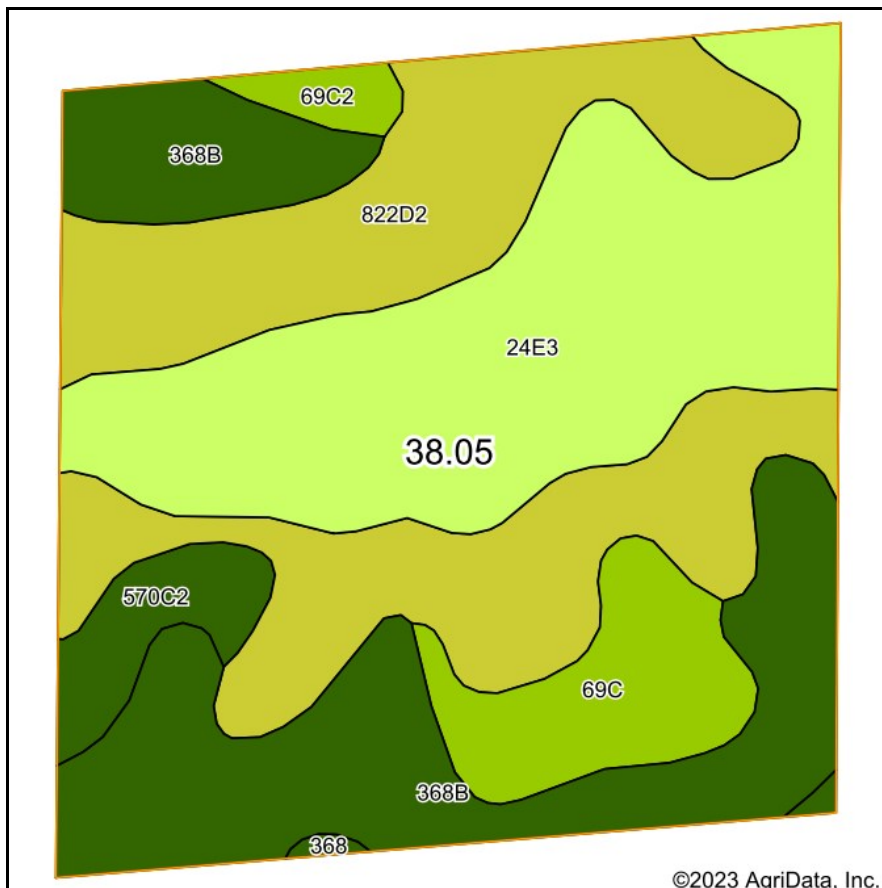
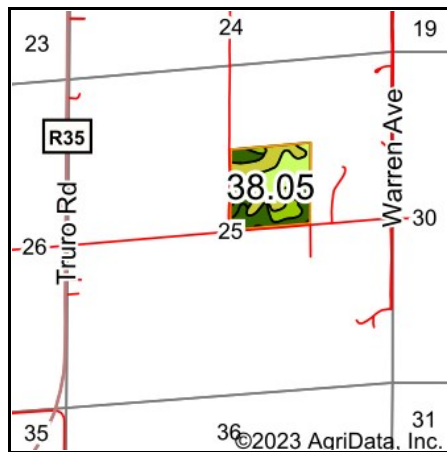


Soils Map



Soils data provided by USDA and NRCS.



State: **Iowa**
 County: **Madison**
 Location: **25-75N-26W**
 Township: **South**
 Acres: **38.05**
 Date: **7/31/2023**



Area Symbol: IA121, Soil Area Version: 26						
Code	Soil Description	Acres	Percent of field	CSR2 Legend	Non-Irr Class *c	CSR2**
822D2	Lamoni clay loam, 9 to 14 percent slopes, eroded	12.35	32.5%		IVe	7
24E3	Shelby clay loam, dissected till plain, 14 to 18 percent slopes, severely eroded	11.49	30.2%		VIe	33
368B	Macksburg silty clay loam, 2 to 5 percent slopes	9.25	24.3%		Ile	89
69C	Clearfield silty clay loam, dissected till plain, 5 to 9 percent slopes	2.88	7.6%		IIIw	59
570C2	Nira silty clay loam, dissected till plain, 5 to 9 percent slopes, eroded	1.39	3.7%		Ile	81
69C2	Clearfield silty clay loam, dissected till plain, 5 to 9 percent slopes, eroded	0.54	1.4%		IIIw	56
368	Macksburg silty clay loam, 0 to 2 percent slopes	0.15	0.4%		Iw	93
Weighted Average					3.98	42.5

**IA has updated the CSR values for each county to CSR2.

*c: Using Capabilities Class Dominant Condition Aggregation Method