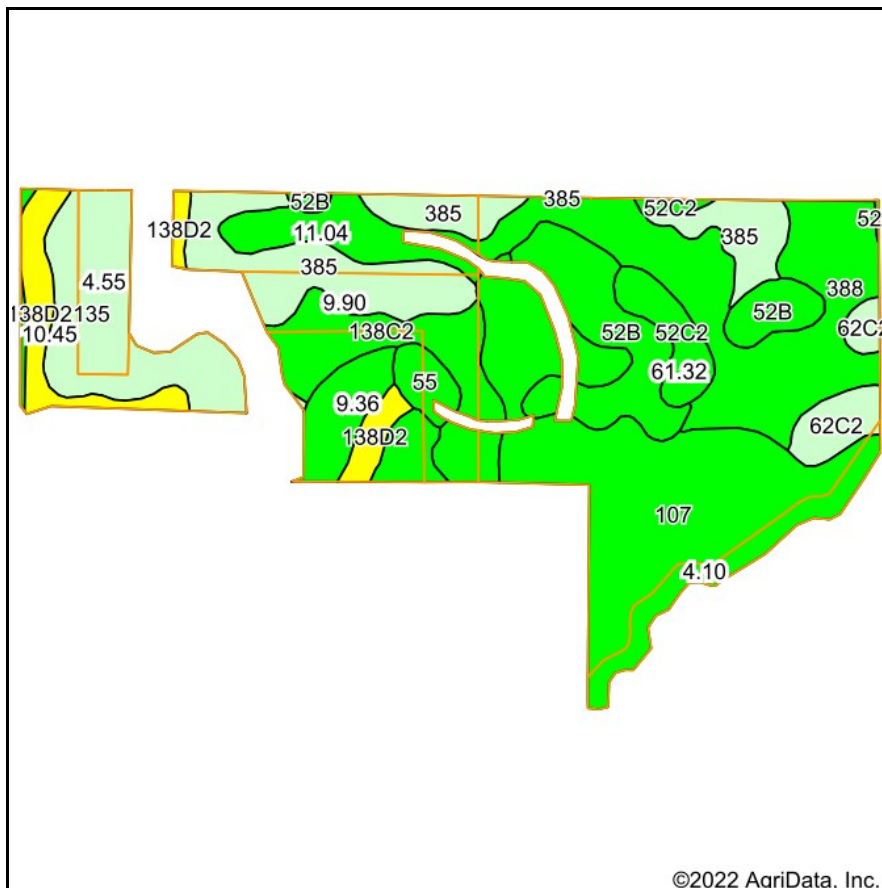
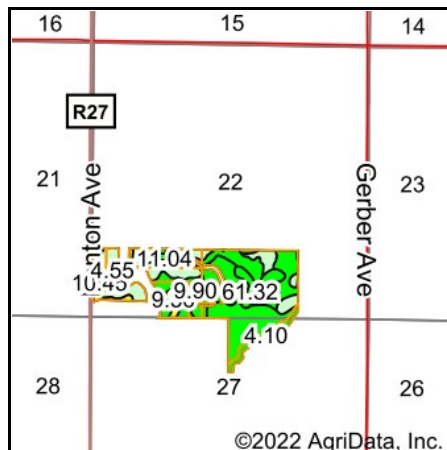


Soils Map



Soils data provided by USDA and NRCS.



State: **Iowa**
 County: **Hamilton**
 Location: **22-86N-26W**
 Township: **Marion**
 Acres: **110.72**
 Date: **4/22/2022**



Maps Provided By:



Area Symbol: IA079, Soil Area Version: 25							
Code	Soil Description	Acres	Percent of field	CSR2 Legend	Non-Irr Class *c	CSR2**	CSR
107	Webster clay loam, 0 to 2 percent slopes	30.15	27.2%		IIw	86	85
388	Kossuth silty clay loam, 0 to 2 percent slopes	22.16	20.0%		IIw	86	79
385	Guckeen clay loam, 1 to 3 percent slopes	13.61	12.3%		IIw	76	
135	Coland clay loam, 0 to 2 percent slopes, occasionally flooded	10.95	9.9%		IIw	76	80
52B	Bode clay loam, 2 to 6 percent slopes	10.50	9.5%		IIe	91	80
138C2	Clarion loam, 6 to 10 percent slopes, moderately eroded	8.01	7.2%		IIle	83	65
138D2	Clarion loam, 9 to 14 percent slopes, moderately eroded	5.61	5.1%		IIle	57	55
52C2	Bode clay loam, 6 to 10 percent slopes, moderately eroded	3.33	3.0%		IIle	82	63
62C2	Storden loam, 6 to 10 percent slopes, moderately eroded	3.06	2.8%		IIle	64	52
138B	Clarion loam, 2 to 6 percent slopes	1.70	1.5%		IIe	89	82
55	Nicollet clay loam, 1 to 3 percent slopes	1.64	1.5%		Iw	89	90
Weighted Average					2.17	81.9	*-

**IA has updated the CSR values for each county to CSR2.

*- CSR weighted average cannot be calculated on the current soils data, use prior data version for csr values.

*c: Using Capabilities Class Dominant Condition Aggregation Method