

IOWA  
POLK

Form: FSA-156EZ

See Page 3 for non-discriminatory Statements.



United States Department of Agriculture  
Farm Service Agency

### Abbreviated 156 Farm Record

FARM : 8124

Prepared : 7/17/23 10:48 AM CST

Crop Year : 2023

Operator Name : XXXXXXXXXX  
CRP Contract Number(s) : None  
Recon ID : 19-153-2022-42  
Transferred From : None  
ARCPLC G//F Eligibility : Eligible

#### Farm Land Data

Farmland	Cropland	DCP Cropland	WBP	EWP	WRP	GRP	Sugarcane	Farm Status	Number Of Tracts
170.09	161.99	161.99	0.00	0.00	0.00	0.00	0.0	Active	2
State Conservation	Other Conservation	Effective DCP Cropland		Double Cropped		CRP	MPL	DCP Ag.Rel. Activity	SOD
0.00	0.00	161.99		0.00		0.00	0.00	0.00	0.00

#### Crop Election Choice

ARC Individual	ARC County	Price Loss Coverage
None	OATS, CORN, SORGH, SOYBN	None

#### DCP Crop Data

Crop Name	Base Acres	CCC-505 CRP Reduction Acres	PLC Yield	HIP
Corn	140.01	0.00	120	
Soybeans	19.61	0.00	43	
<b>TOTAL</b>	<b>159.62</b>	<b>0.00</b>		

#### NOTES

Tract Number : 2127

Description : 10-81-22 WASHINGTON  
FSA Physical Location : IOWA/POLK  
ANSI Physical Location : IOWA/POLK  
BIA Unit Range Number :  
HEL Status : NHEL: No agricultural commodity planted on undetermined fields  
Wetland Status : Wetland determinations not complete  
WL Violations : None  
Owners : XXXXXXXXXX  
Other Producers : XXXXXXXXXX  
Recon ID : None

#### Tract Land Data

Farm Land	Cropland	DCP Cropland	WBP	EWP	WRP	GRP	Sugarcane
34.85	34.85	34.85	0.00	0.00	0.00	0.00	0.0



**Abbreviated 156 Farm Record**

**Tract 2127 Continued ...**

State Conservation	Other Conservation	Effective DCP Cropland	Double Cropped	CRP	MPL	DCP Ag. Rel Activity	SOD
0.00	0.00	34.85	0.00	0.00	0.00	0.00	0.00

**DCP Crop Data**

Crop Name	Base Acres	CCC-505 CRP Reduction Acres	PLC Yield
Corn	21.70	0.00	120
Soybeans	12.90	0.00	43
<b>TOTAL</b>	<b>34.60</b>	<b>0.00</b>	

**NOTES**

**Tract Number : 2152**

**Description :** 22-81-22 WASHINGTON  
**FSA Physical Location :** IOWA/POLK  
**ANSI Physical Location :** IOWA/POLK  
**BIA Unit Range Number :**  
**HEL Status :** NHEL: No agricultural commodity planted on undetermined fields  
**Wetland Status :** Wetland determinations not complete  
**WL Violations :** None  
**Owners :** XXXXXXXXXX  
**Other Producers :** XXXXXXXXXX  
**Recon ID :** None

**Tract Land Data**

Farm Land	Cropland	DCP Cropland	WBP	EWP	WRP	GRP	Sugarcane
135.24	127.14	127.14	0.00	0.00	0.00	0.00	0.0
State Conservation	Other Conservation	Effective DCP Cropland	Double Cropped	CRP	MPL	DCP Ag. Rel Activity	SOD
0.00	0.00	127.14	0.00	0.00	0.00	0.00	0.00

**DCP Crop Data**

Crop Name	Base Acres	CCC-505 CRP Reduction Acres	PLC Yield
Corn	118.31	0.00	120
Soybeans	6.71	0.00	43
<b>TOTAL</b>	<b>125.02</b>	<b>0.00</b>	

**NOTES**



Abbreviated 156 Farm Record

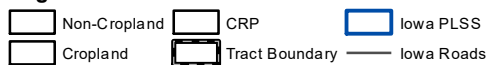
*In accordance with Federal civil rights law and U.S. Department of Agriculture (USDA) civil rights regulations and policies, the USDA, its Agencies, offices, and employees, and institutions participating in or administering USDA programs are prohibited from discriminating based on race, color, national origin, religion, sex, gender identity (including gender expression), sexual orientation, disability, age, marital status, family/parental status, income derived from a public assistance program, political beliefs, or reprisal or retaliation for prior civil rights activity, in any program or activity conducted or funded by USDA (not all bases apply to all programs). Remedies and complaint filing deadlines vary by program or incident.*

*Persons with disabilities who require alternative means of communication for program information (e.g., Braille, large print, audiotape, American Sign Language, etc.) should contact the responsible Agency or USDA's TARGET Center at (202) 720-2600 (voice and TTY) or contact USDA through the Federal Relay Service at (800) 877-8339. Additionally, program information may be made available in languages other than English.*

*To file a program discrimination complaint, complete the USDA Program Discrimination Complaint Form, AD-3027, found online at [http://www.ascr.usda.gov/complaint\\_filing\\_cust.html](http://www.ascr.usda.gov/complaint_filing_cust.html) and at any USDA office or write a letter addressed to USDA and provide in the letter all of the information requested in the form. To request a copy of the complaint form, call (866) 632-9992. Submit your completed form or letter to USDA by: (1) mail: U.S. Department of Agriculture Office of the Assistant Secretary for Civil Rights 1400 Independence Avenue, SW Washington, D.C. 20250-9410; (2) fax: (202) 690-7442; or (3) e-mail: [program.intake@usda.gov](mailto:program.intake@usda.gov). USDA is an equal opportunity provider, employer, and lender.*



### Legend



### Wetland Determination Identifiers

- Restricted Use
- ▼ Limited Restrictions
- Exempt from Conservation Compliance Provisions

United States Department of Agriculture (USDA) Farm Service Agency (FSA) maps are for FSA Program administration only. This map does not represent a legal survey or reflect actual ownership; rather it depicts the information provided directly from the producer and/or National Agricultural Imagery Program (NAIP) imagery. The producer accepts the data 'as is' and assumes all risks associated with its use. USDA-FSA assumes no responsibility for actual or consequential damage incurred as a result of any user's reliance on this data outside FSA Programs. Wetland identifiers do not represent the size, shape, or specific determination of the area. Refer to your original determination (CPA-026 and attached maps) for exact boundaries and determinations or contact USDA Natural Resources Conservation Service (NRCS).

USDA is an equal opportunity provider, employer, and lender.

2023 Program Year

Map Created April 12, 2023

# Farm 8124

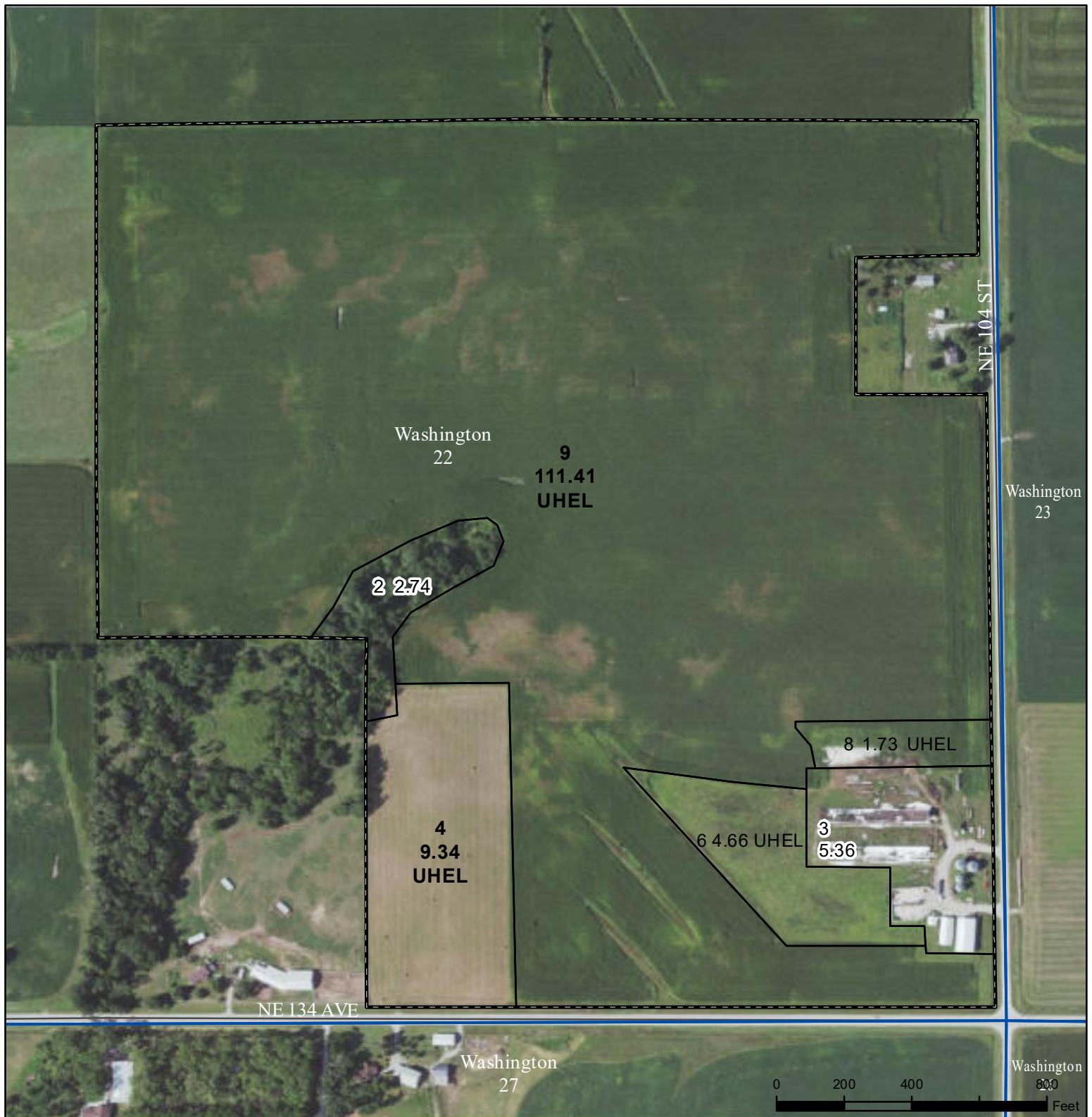
Tract 2127

Tract Cropland Total: 34.85 acres



United States  
Department of  
Agriculture

## Polk County, Iowa



### Legend

- Non-Cropland
- Cropland
- CRP
- Iowa PLSS
- Tract Boundary
- Iowa Roads

### Wetland Determination Identifiers

- Restricted Use
- Limited Restrictions
- Exempt from Conservation
- Compliance Provisions

United States Department of Agriculture (USDA) Farm Service Agency (FSA) maps are for FSA Program administration only. This map does not represent a legal survey or reflect actual ownership; rather it depicts the information provided directly from the producer and/or National Agricultural Imagery Program (NAIP) imagery. The producer accepts the data 'as is' and assumes all risks associated with its use. USDA-FSA assumes no responsibility for actual or consequential damage incurred as a result of any user's reliance on this data outside FSA Programs. Wetland identifiers do not represent the size, shape, or specific determination of the area. Refer to your original determination (CPA-026 and attached maps) for exact boundaries and determinations or contact USDA Natural Resources Conservation Service (NRCS).

USDA is an equal opportunity provider, employer, and lender.

2023 Program Year

Map Created April 12, 2023

Farm **8124**

Tract **2152**

Tract Cropland Total: 127.14 acres





Summary of Bases, PLC Yields, Elections, HIP, and CRP Reductions

See Page 1 for non-discriminatory Statements.

Polk County - IA  
1513 N ANKENY BLVD-SUITE 1  
ANKENY, IA 50023-4167  
(515)964-4295

[REDACTED]

Year : 2023  
Farm : 8124  
ARCPLC G/I/F Eligibility: Eligible

Farm Summary Data					
Crop Name	Election Choice	HIP	Base Acres	PLC Yield	CCC-505 CRP Reduction Acres
Corn	ARC County		140.01	120	0.00
Grain Sorghum	ARC County		0.00	0	0.00
Oats	ARC County		0.00	0	0.00
Soybeans	ARC County		19.61	43	0.00

Above is a summary of the bases, yields, ARC/PLC program election choice, and Historical Irrigated Percentage (HIP) established for this farm. Contact your FSA Service Center Office for additional details or question concerning this farm.

This farm is the result of a division of farm number 8062.

Owner : [REDACTED]  
Operator : [REDACTED]  
Farm Description : 19-153-8124

*In accordance with Federal civil rights law and U.S. Department of Agriculture (USDA) civil rights regulations and policies, the USDA, its Agencies, offices, and employees, and institutions participating in or administering USDA programs are prohibited from discriminating based on race, color, national origin, religion, sex, gender identity (including gender expression), sexual orientation, disability, age, marital status, family/parental status, income derived from a public assistance program, political beliefs, or reprisal or retaliation for prior civil rights activity, in any program or activity conducted or funded by USDA (not all bases apply to all programs). Remedies and complaint filing deadlines vary by program or incident.*

*Persons with disabilities who require alternative means of communication for program information (e.g., Braille, large print, audiotope, American Sign Language, etc.) should contact the responsible Agency or USDA's TARGET Center at (202) 720-2600 (voice and TTY) or contact USDA through the Federal Relay Service at (800) 877-8339. Additionally, program information may be made available in languages other than English.*

*To file a program discrimination complaint, complete the USDA Program Discrimination Complaint Form, AD-3027, found online at [http://www.ascr.usda.gov/complaint\\_filing\\_cust.html](http://www.ascr.usda.gov/complaint_filing_cust.html) and at any USDA office or write a letter addressed to USDA and provide in the letter all of the information requested in the form. To request a copy of the complaint form, call (866) 632-9992. Submit your completed form or letter to USDA by: (1) mail: U.S. Department of Agriculture Office of the Assistant Secretary for Civil Rights 1400 Independence Avenue, SW Washington, D.C. 20250-9410; (2) fax: (202) 690-7442; or (3) e-mail: [program.intake@usda.gov](mailto:program.intake@usda.gov). USDA is an equal opportunity provider, employer, and lender.*