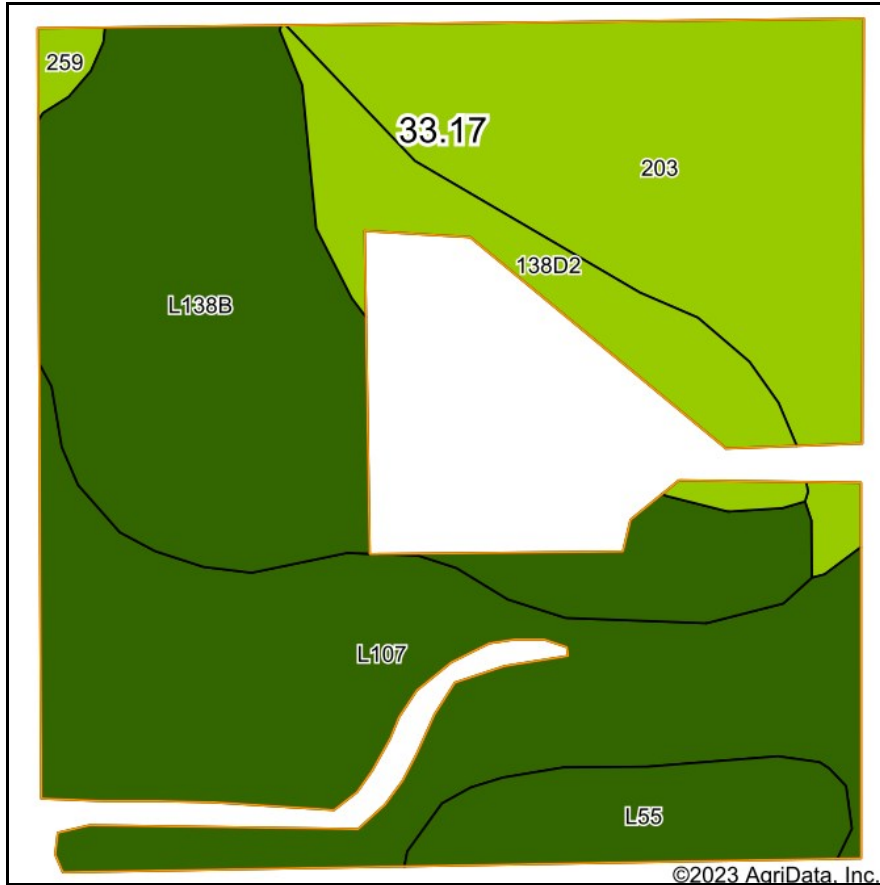
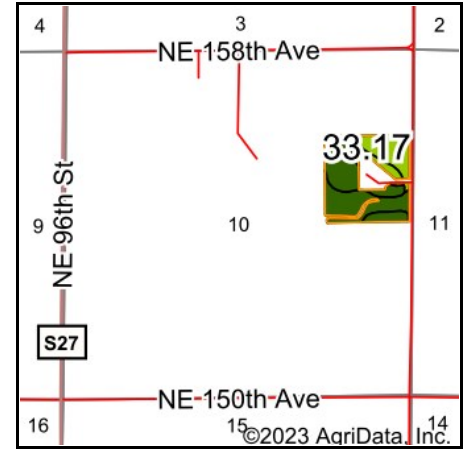


# Soils Map



Soils data provided by USDA and NRCS.



State: **Iowa**  
 County: **Polk**  
 Location: **10-81N-22W**  
 Township: **Washington**  
 Acres: **33.17**  
 Date: **7/5/2023**



Area Symbol: IA153, Soil Area Version: 25							
Code	Soil Description	Acres	Percent of field	CSR2 Legend	Non-Irr Class *c	CSR2**	CSR
L107	Webster clay loam, Bemis moraine, 0 to 2 percent slopes	10.40	31.4%		IIw	88	
L138B	Clarion loam, Bemis moraine, 2 to 6 percent slopes	9.96	30.0%		IIe	88	
203	Cylinder loam, 0 to 2 percent slopes	7.75	23.4%		IIIs	58	82
138D2	Clarion loam, 9 to 14 percent slopes, moderately eroded	2.64	8.0%		IIIe	56	58
L55	Nicollet loam, 1 to 3 percent slopes	2.19	6.6%		Ie	91	
259	Biscay clay loam, 0 to 2 percent slopes	0.23	0.7%		IIw	52	81
<b>Weighted Average</b>					<b>2.01</b>	<b>78.4</b>	<b>*-</b>

\*\*IA has updated the CSR values for each county to CSR2.

\*- CSR weighted average cannot be calculated on the current soils data, use prior data version for csr values.

\*c: Using Capabilities Class Dominant Condition Aggregation Method