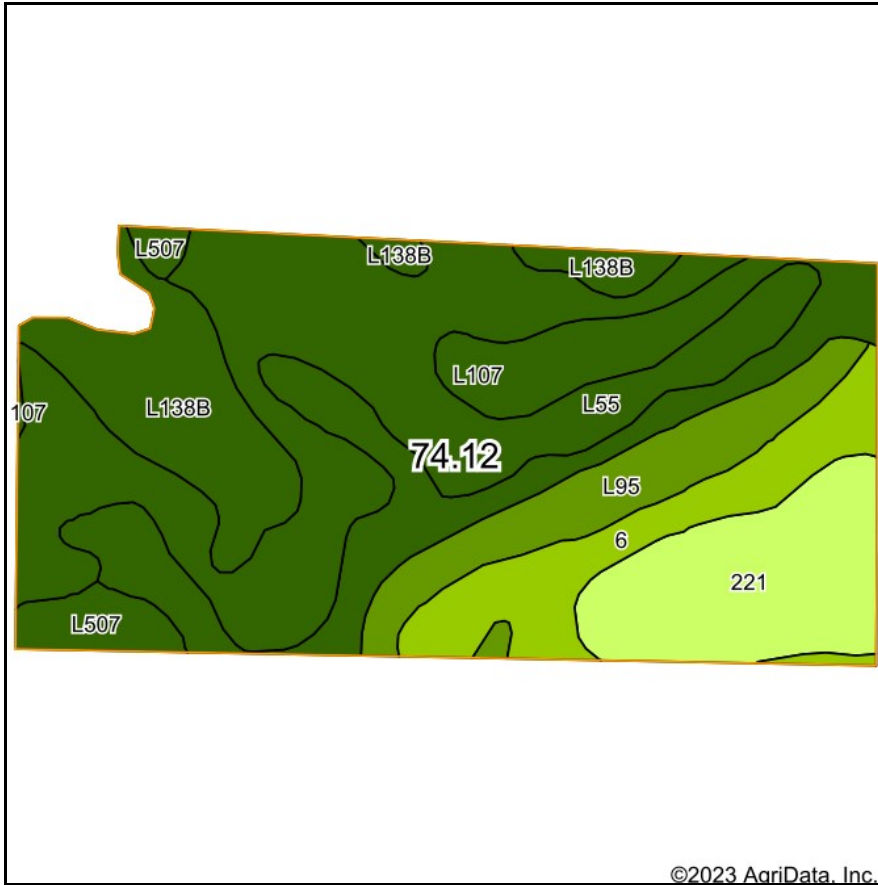
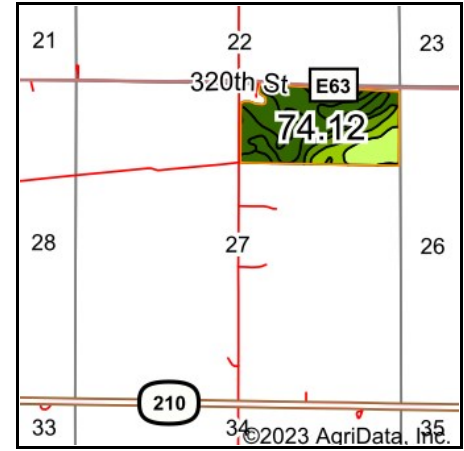


Soils Map



Soils data provided by USDA and NRCS.



State: **Iowa**
 County: **Story**
 Location: **27-82N-24W**
 Township: **Palestine**
 Acres: **74.12**
 Date: **3/2/2023**



Area Symbol: IA169, Soil Area Version: 34							
Code	Soil Description	Acres	Percent of field	CSR2 Legend	Non-Irr Class *c	CSR2**	CSR
L55	Nicollet loam, 1 to 3 percent slopes	26.06	35.2%		le	91	
L107	Webster clay loam, Bemis moraine, 0 to 2 percent slopes	14.10	19.0%		IIw	88	
221	Klossner muck, 0 to 1 percent slopes	9.18	12.4%		IIIw	32	52
L138B	Clarion loam, Bemis moraine, 2 to 6 percent slopes	8.88	12.0%		Ile	88	
6	Okoboji silty clay loam, 0 to 1 percent slopes	7.07	9.5%		IIIw	59	59
L95	Harps clay loam, Bemis moraine, 0 to 2 percent slopes	6.51	8.8%		IIw	75	
L507	Canisteo clay loam, Bemis moraine, 0 to 2 percent slopes	2.32	3.1%		IIw	87	
Weighted Average					1.87	78.2	*-

**IA has updated the CSR values for each county to CSR2.

*- CSR weighted average cannot be calculated on the current soils data, use prior data version for csr values.

*c: Using Capabilities Class Dominant Condition Aggregation Method